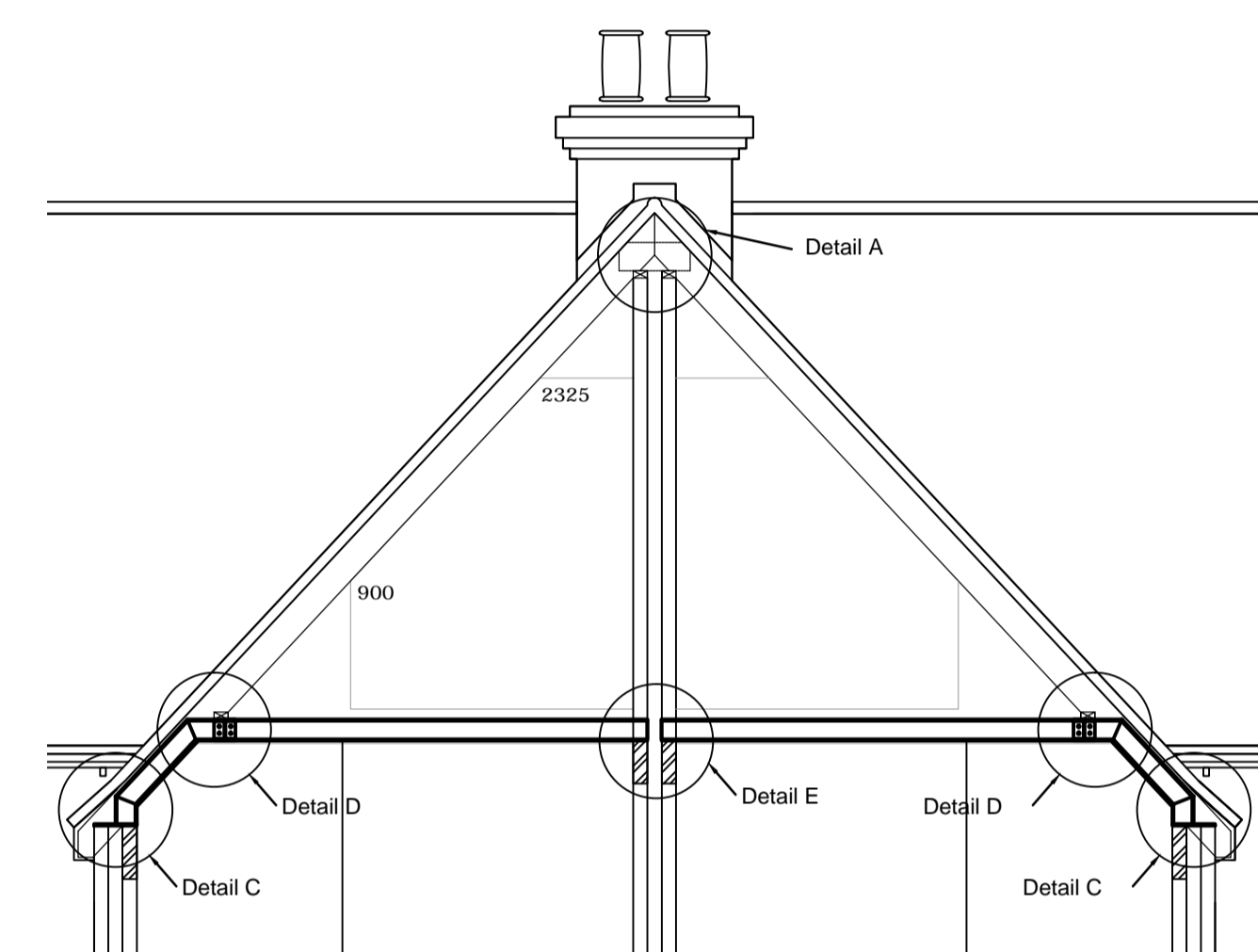
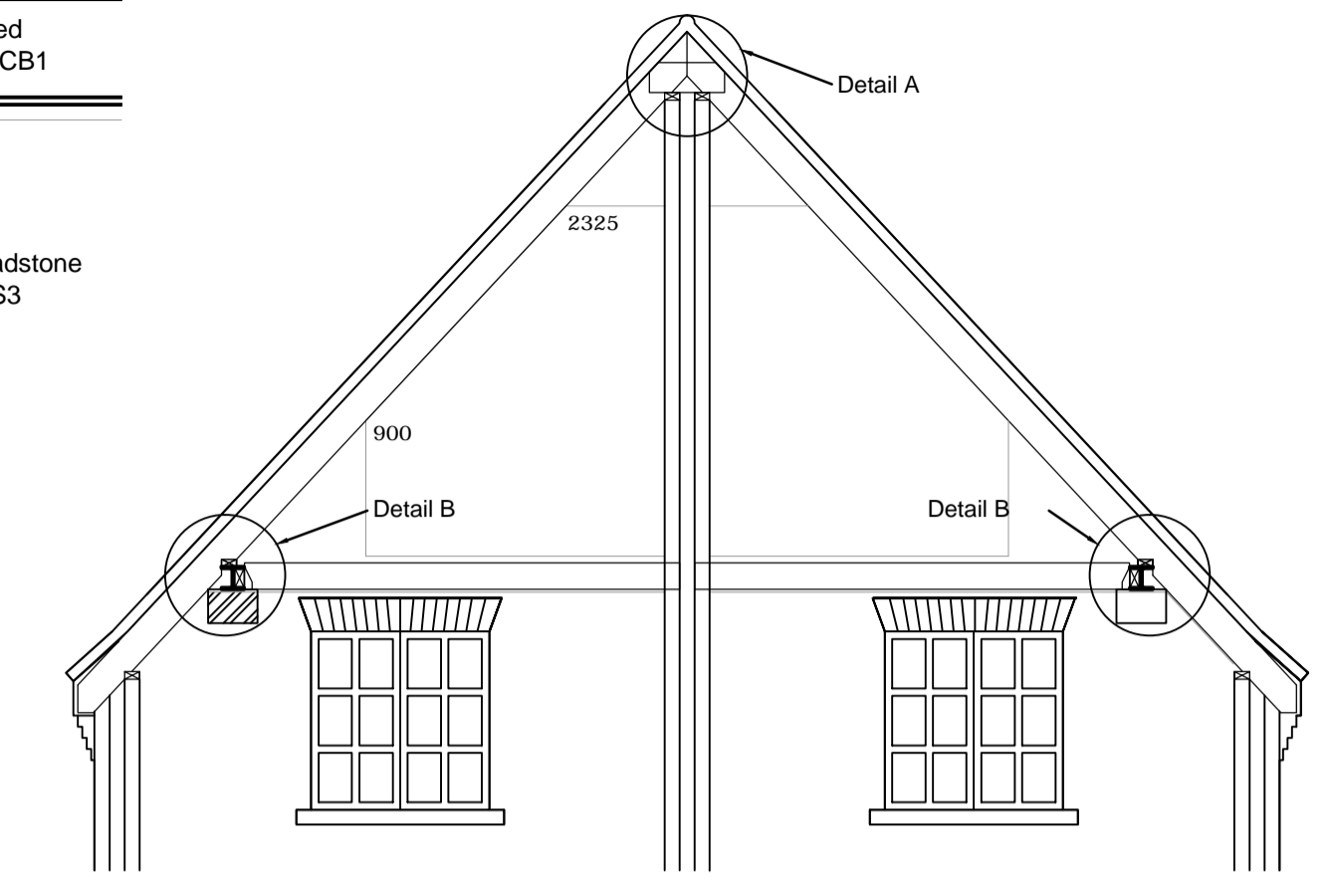
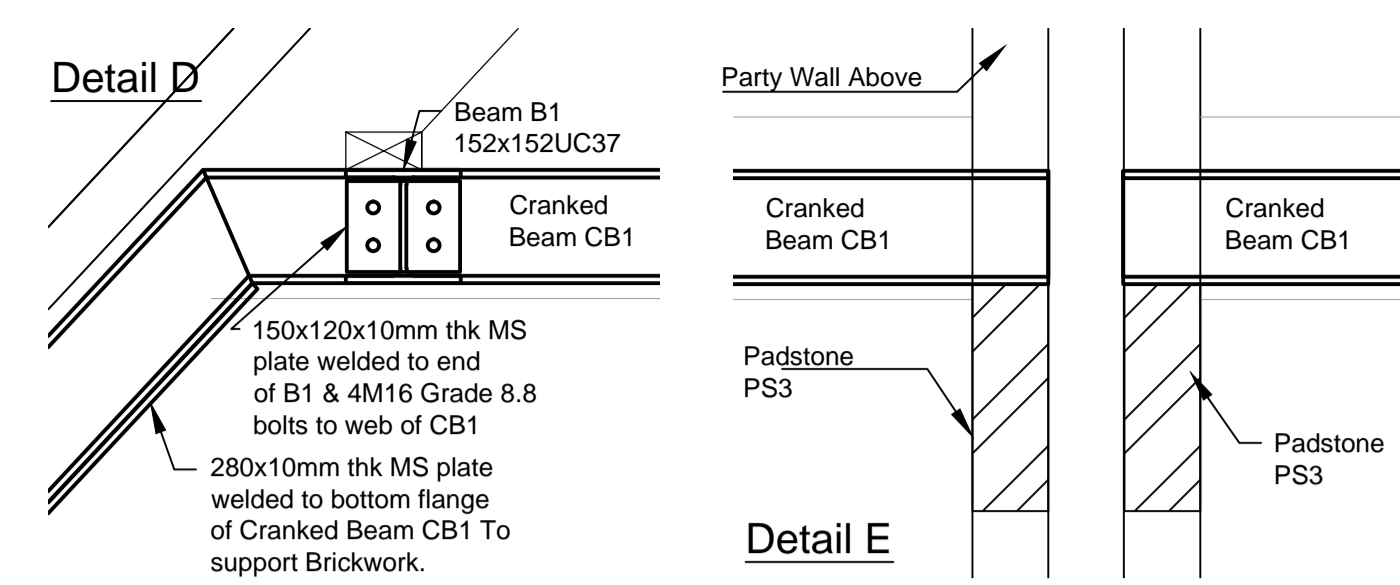
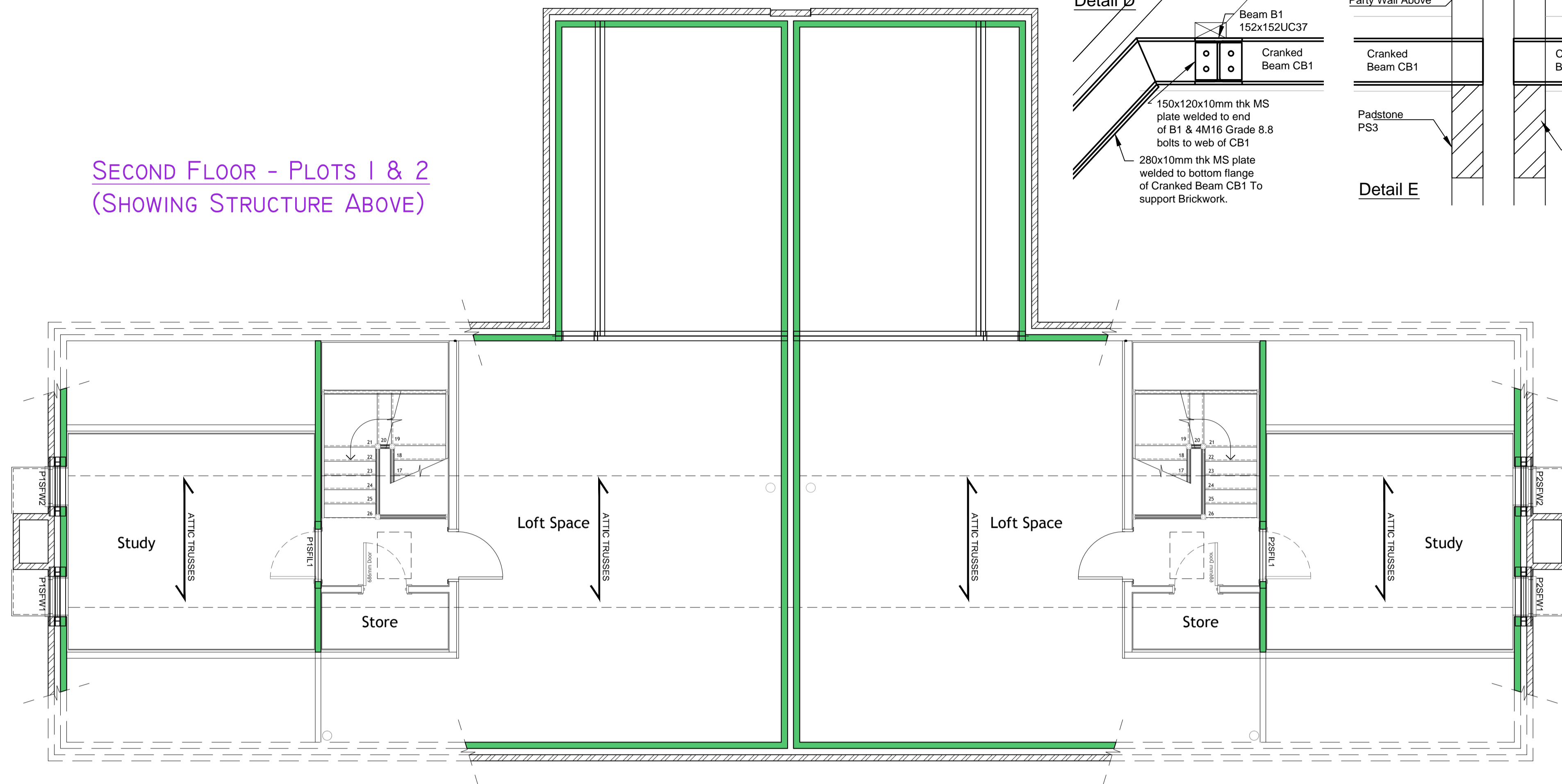


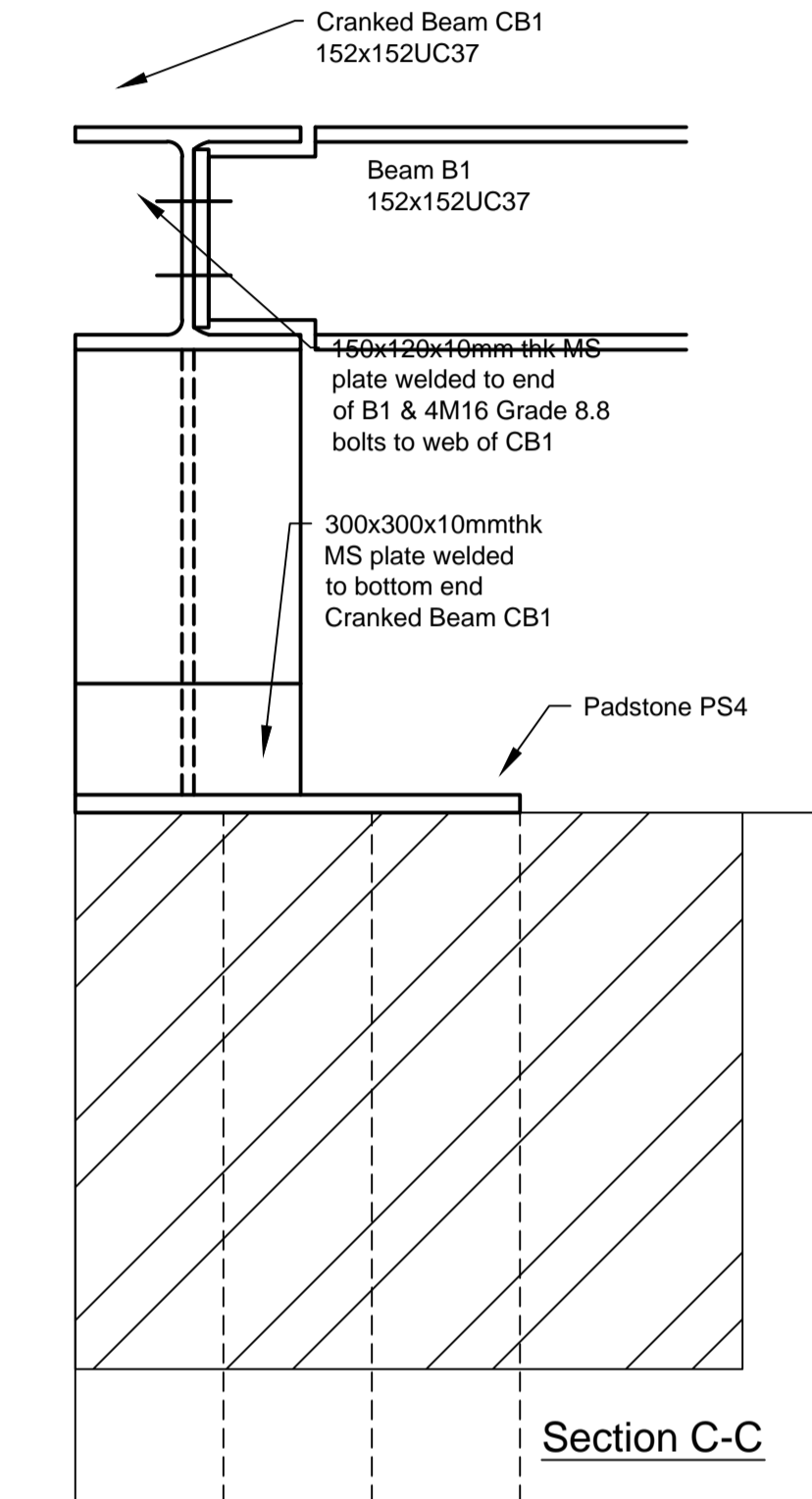
SECOND FLOOR - PLOTS 1 & 2  
(SHOWING STRUCTURE ABOVE)



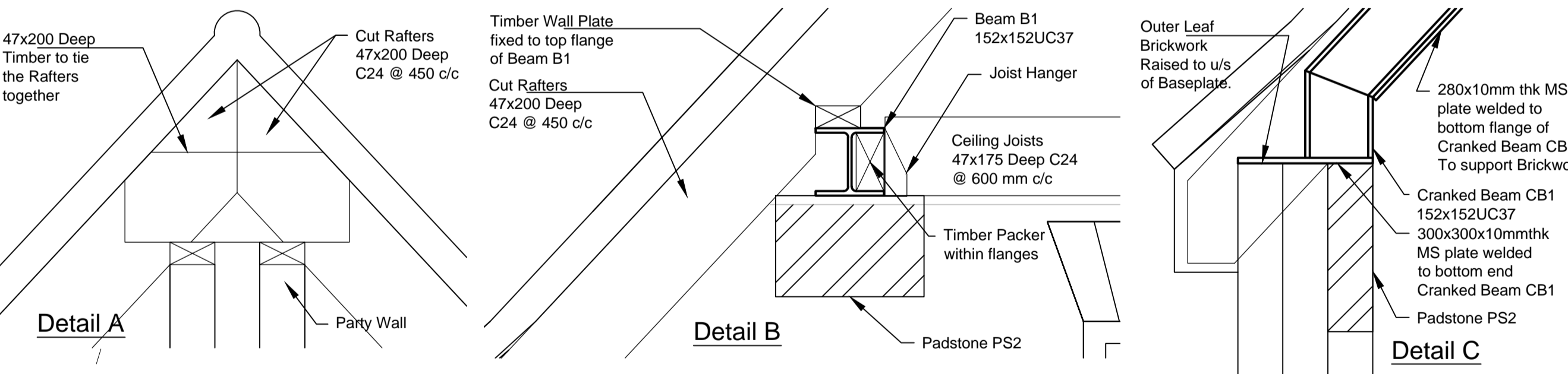
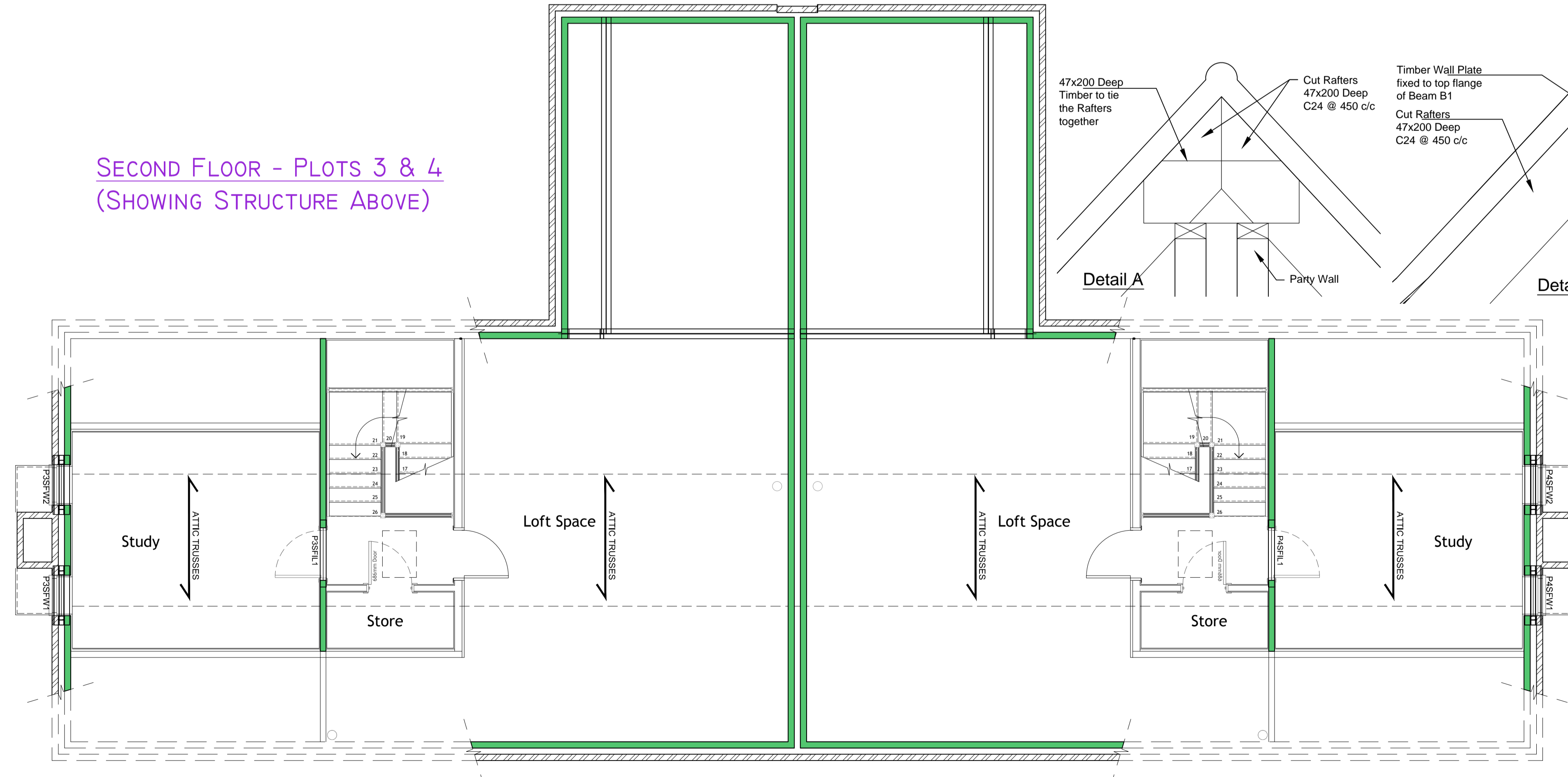
**STRUCTURAL NOTES**  
Please refer to all other design drawings by others.  
Please refer to drg. no. 1088/300 for specification and notes relating to structural engineering designs.  
Blockwork strengths to be as follows:-  
From top of foundation to u/s of 1st floor - 7.3N/mm<sup>2</sup>  
From 1st floor and above - 3.5 or 5N/mm<sup>2</sup>

**STRUCTURAL KEY**  
Span direction of infill members.  
MJ Movement joint in brickwork only (movement joints in blockwork by supplier).  
IL Internal box lintels.  
EL External cavity lintels.  
7.3N/mm<sup>2</sup> strength blockwork.  
3.5N/mm<sup>2</sup> or 5.0N/mm<sup>2</sup> strength blockwork.  
Engineering brickwork.

All lintels to be IG lintels of similar approved. Lintel sizes to be confirmed.



SECOND FLOOR - PLOTS 3 & 4  
(SHOWING STRUCTURE ABOVE)



Rev	Amendment	By	Date
P1	First issue.	CST	26.07.12
P2	Second Floor Layouts Added.	CST	06.08.12
A	Construction	CST	10.09.12

**CISTEC**  
CHARTERED CIVIL & STRUCTURAL ENGINEERING CONSULTANTS

Suite 116, Milton Keynes Business Centre, Foxhunter Drive, Milton Keynes, MK14 6GD.  
Linford Wood, Milton Keynes, MK14 6GD.  
T. 01582 764111 F. 01582 764100 www.cistec.net e.info@cistec.net

Client **Jarvis Group**

1 The Forresters, High Street, Harpenden, AL5 2FB, T. 01582 764111 F. 01582 764100 www.jarvisgrouppld.co.uk

Drawing **STRUCTURAL ENGINEERING**  
Typical Sections A-A, B-B & C-C  
And Details A, B, C, D & E.

Project **Six Tunnel Farm, Gaddesden Row, Hemel Hempstead**

Scale 1:50 @ A1 Date 17.10.11 Approved AA

Drawing no. **1183 - 305 A**

STATUS: CONSTRUCTION