

Please refer to all other design drawings by others.
Please refer to dry. no. 1088/300 for specification and notes relating to structural engineering designs.
Blockwork strengths to be as follows:-

- 7.2N/m²
From top of foundations to u/s of 1st floor
- 3.5 or 5N/m²
From 1st floor and above

STRUCTURAL

Span direction of in-fill members.

M0 Movement joint in brickwork only (movement joints in blockwork by supplier)

11 Internal box in-fill.

EL External cavity in-fill.

7.2N/m² strength blockwork.

3.5N/m² or 5.0N/m² strength blockwork.

All in-fill to be 1G in-fill of similar approved. Lined steel to be confirmed.

Particulars: P25 x 150 Pans

P25 x 100 x 555 x 300 Deep

P25 x 100 x 555 x 225 Deep

P25 x 100 x 555 x 225 Deep

P25 x 100 x 555 x 225 Deep

P25 x 100 x 555 x 225 Deep

P25 x 100 x 555 x 225 Deep

P25 x 100 x 555 x 225 Deep

P25 x 100 x 555 x 225 Deep

P25 x 100 x 555 x 225 Deep

P25 x 100 x 555 x 225 Deep

P25 x 100 x 555 x 225 Deep

P25 x 100 x 555 x 225 Deep

P25 x 100 x 555 x 225 Deep

P25 x 100 x 555 x 225 Deep

P25 x 100 x 555 x 225 Deep

P25 x 100 x 555 x 225 Deep

P25 x 100 x 555 x 225 Deep

P25 x 100 x 555 x 225 Deep

P25 x 100 x 555 x 225 Deep

P25 x 100 x 555 x 225 Deep

P25 x 100 x 555 x 225 Deep

P25 x 100 x 555 x 225 Deep

P25 x 100 x 555 x 225 Deep

P25 x 100 x 555 x 225 Deep

P25 x 100 x 555 x 225 Deep

P25 x 100 x 555 x 225 Deep

P25 x 100 x 555 x 225 Deep

P25 x 100 x 555 x 225 Deep

P25 x 100 x 555 x 225 Deep

P25 x 100 x 555 x 225 Deep

P25 x 100 x 555 x 225 Deep

P25 x 100 x 555 x 225 Deep

P25 x 100 x 555 x 225 Deep

P25 x 100 x 555 x 225 Deep

P25 x 100 x 555 x 225 Deep

P25 x 100 x 555 x 225 Deep

P25 x 100 x 555 x 225 Deep

P25 x 100 x 555 x 225 Deep

P25 x 100 x 555 x 225 Deep

P25 x 100 x 555 x 225 Deep

P25 x 100 x 555 x 225 Deep

P25 x 100 x 555 x 225 Deep

P25 x 100 x 555 x 225 Deep

P25 x 100 x 555 x 225 Deep

P25 x 100 x 555 x 225 Deep

P25 x 100 x 555 x 225 Deep

P25 x 100 x 555 x 225 Deep

P25 x 100 x 555 x 225 Deep

P25 x 100 x 555 x 225 Deep

P25 x 100 x 555 x 225 Deep

P25 x 100 x 555 x 225 Deep

P25 x 100 x 555 x 225 Deep

P25 x 100 x 555 x 225 Deep

P25 x 100 x 555 x 225 Deep

P25 x 100 x 555 x 225 Deep

P25 x 100 x 555 x 225 Deep

P25 x 100 x 555 x 225 Deep

P25 x 100 x 555 x 225 Deep

P25 x 100 x 555 x 225 Deep

P25 x 100 x 555 x 225 Deep

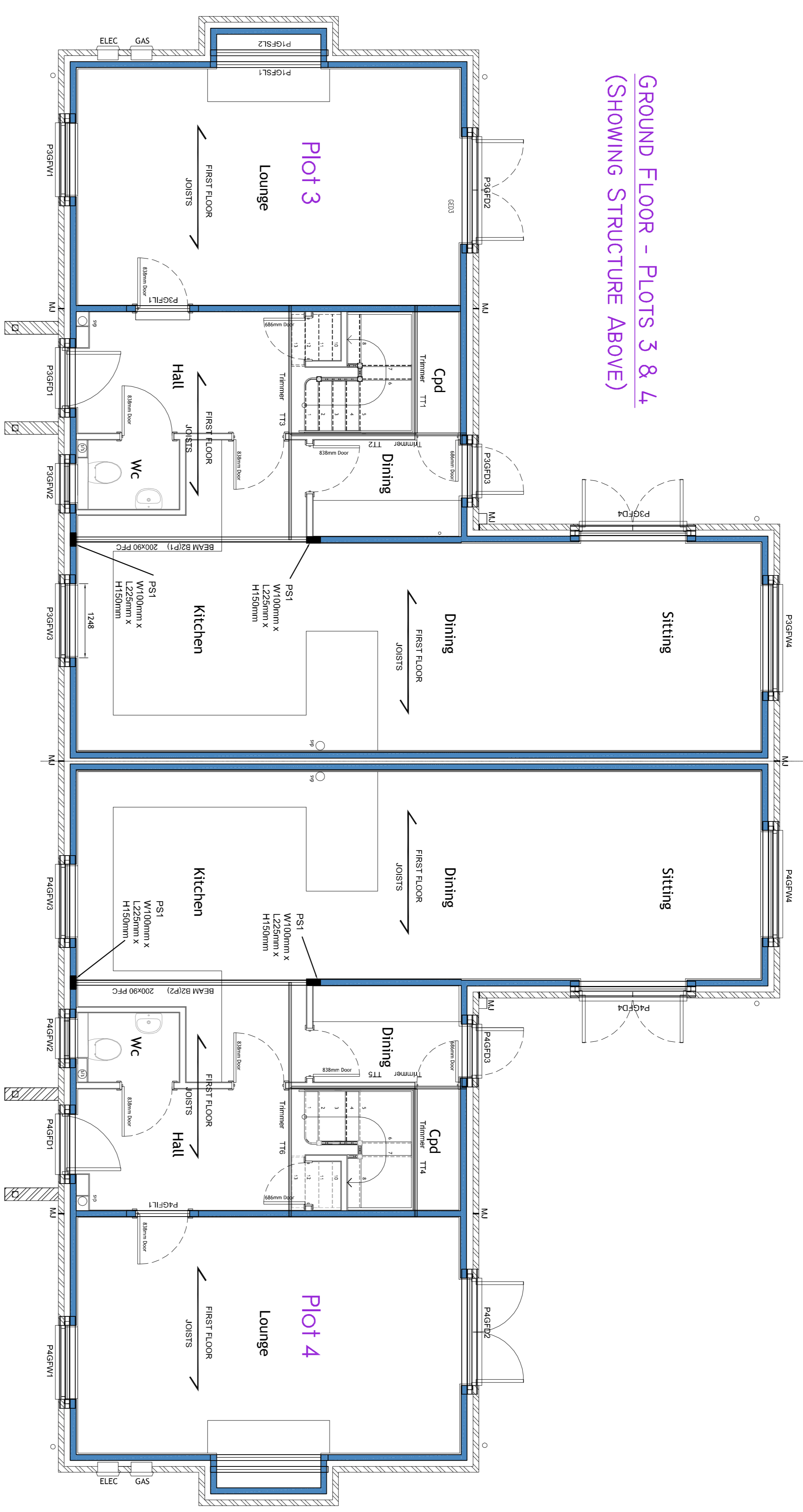
P25 x 100 x 555 x 225 Deep

P25 x 100 x 555 x 225 Deep

P25 x 100 x 555 x 225 Deep

P25 x 100 x 555 x 225 Deep

GROUND FLOOR - PLOTS 3 & 4
(SHOWING STRUCTURE ABOVE)



Ground Floor Window Lintel Schedule

Number	Structural Opening	Length	Member Type
P25F01	1800mm	1800mm	1500mm UC 115/100 or similar approved
P25F02	1800mm	1800mm	1500mm UC 115/100 or similar approved
P25F03	1800mm	1800mm	1500mm UC 115/100 or similar approved
P25F04	1800mm	1800mm	1500mm UC 115/100 or similar approved
P25F05	1800mm	1800mm	1500mm UC 115/100 or similar approved
P25F06	1800mm	1800mm	1500mm UC 115/100 or similar approved
P25F07	1800mm	1800mm	1500mm UC 115/100 or similar approved
P25F08	1800mm	1800mm	1500mm UC 115/100 or similar approved
P25F09	1800mm	1800mm	1500mm UC 115/100 or similar approved
P25F10	1800mm	1800mm	1500mm UC 115/100 or similar approved

Ground Floor Doors Lintel Schedule

Number	Structural Opening	Length	Member Type
P25D01	1800mm	1800mm	1500mm UC 115/100 or similar approved
P25D02	1800mm	1800mm	1500mm UC 115/100 or similar approved
P25D03	1800mm	1800mm	1500mm UC 115/100 or similar approved
P25D04	1800mm	1800mm	1500mm UC 115/100 or similar approved
P25D05	1800mm	1800mm	1500mm UC 115/100 or similar approved
P25D06	1800mm	1800mm	1500mm UC 115/100 or similar approved
P25D07	1800mm	1800mm	1500mm UC 115/100 or similar approved
P25D08	1800mm	1800mm	1500mm UC 115/100 or similar approved
P25D09	1800mm	1800mm	1500mm UC 115/100 or similar approved
P25D10	1800mm	1800mm	1500mm UC 115/100 or similar approved

First Floor Window Lintel Schedule

Number	Structural Opening	Length	Member Type
P25F11	1800mm	1800mm	1500mm UC 115/100 or similar approved
P25F12	1800mm	1800mm	1500mm UC 115/100 or similar approved
P25F13	1800mm	1800mm	1500mm UC 115/100 or similar approved
P25F14	1800mm	1800mm	1500mm UC 115/100 or similar approved
P25F15	1800mm	1800mm	1500mm UC 115/100 or similar approved
P25F16	1800mm	1800mm	1500mm UC 115/100 or similar approved
P25F17	1800mm	1800mm	1500mm UC 115/100 or similar approved
P25F18	1800mm	1800mm	1500mm UC 115/100 or similar approved
P25F19	1800mm	1800mm	1500mm UC 115/100 or similar approved
P25F20	1800mm	1800mm	1500mm UC 115/100 or similar approved

Second Floor Window Lintel Schedule

Number	Structural Opening	Length	Member Type
P25F21	1800mm	1800mm	1500mm UC 115/100 or similar approved
P25F22	1800mm	1800mm	1500mm UC 115/100 or similar approved
P25F23	1800mm	1800mm	1500mm UC 115/100 or similar approved
P25F24	1800mm	1800mm	1500mm UC 115/100 or similar approved
P25F25	1800mm	1800mm	1500mm UC 115/100 or similar approved
P25F26	1800mm	1800mm	1500mm UC 115/100 or similar approved
P25F27	1800mm	1800mm	1500mm UC 115/100 or similar approved
P25F28	1800mm	1800mm	1500mm UC 115/100 or similar approved
P25F29	1800mm	1800mm	1500mm UC 115/100 or similar approved
P25F30	1800mm	1800mm	1500mm UC 115/100 or similar approved

Internal Lintel Schedule

Number	Structural Opening	Length	Member Type
P25I01	1800mm	1800mm	1500mm UC 115/100 or similar approved
P25I02	1800mm	1800mm	1500mm UC 115/100 or similar approved
P25I03	1800mm	1800mm	1500mm UC 115/100 or similar approved
P25I04	1800mm	1800mm	1500mm UC 115/100 or similar approved
P25I05	1800mm	1800mm	1500mm UC 115/100 or similar approved
P25I06	1800mm	1800mm	1500mm UC 115/100 or similar approved
P25I07	1800mm	1800mm	1500mm UC 115/100 or similar approved
P25I08	1800mm	1800mm	1500mm UC 115/100 or similar approved
P25I09	1800mm	1800mm	1500mm UC 115/100 or similar approved
P25I10	1800mm	1800mm	1500mm UC 115/100 or similar approved

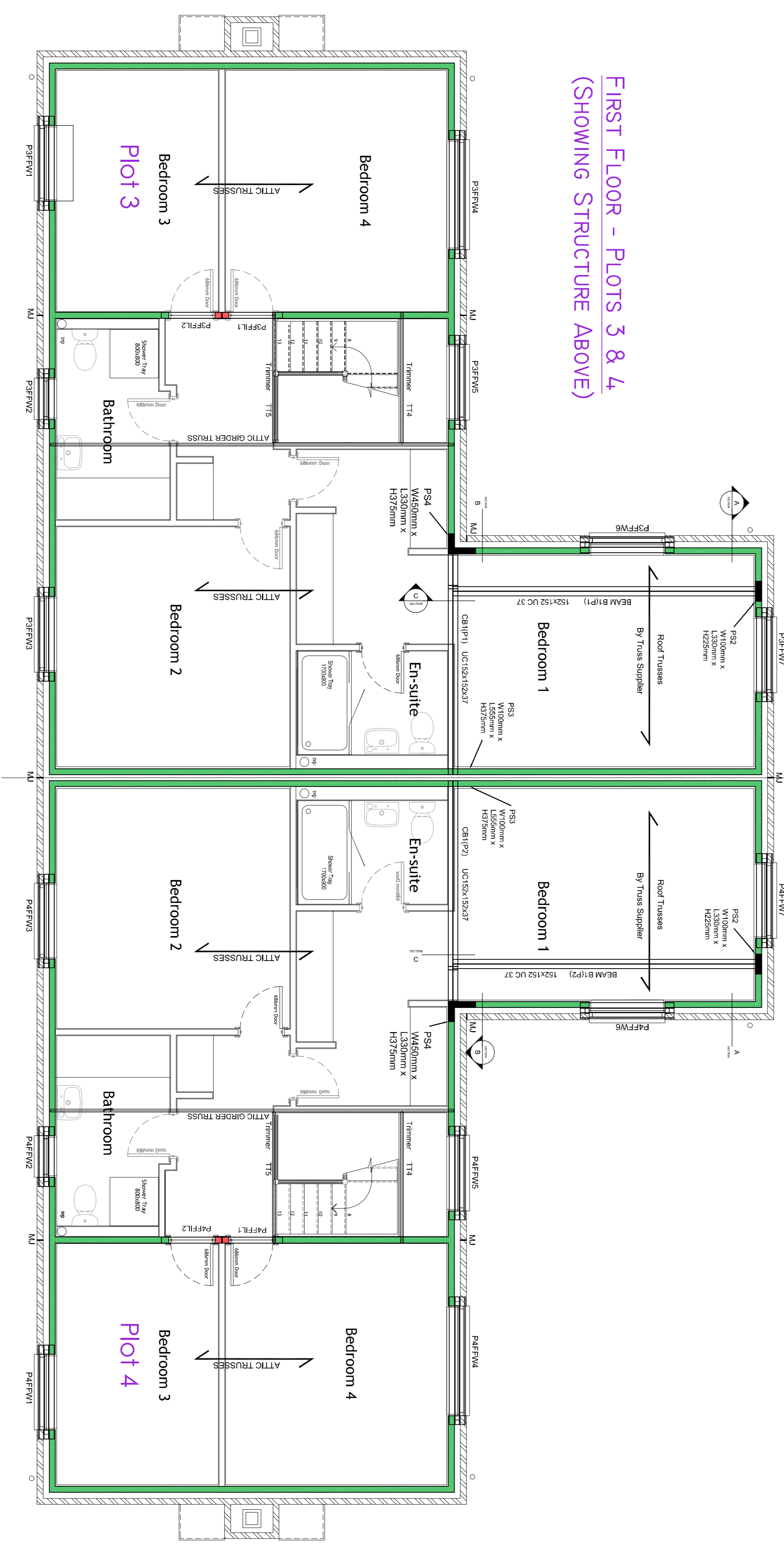
Ground Floor Steel Beams Schedule

Number	Style	Opening	Length	Notes
B25G01	200x200 PFC	3850mm	4150mm	With timber packer within the bearing. Full length.
B25G02	200x200 PFC	3850mm	4150mm	With timber packer within the bearing. Full length.
B25G03	200x200 PFC	3850mm	4150mm	With timber packer within the bearing. Full length.
B25G04	200x200 PFC	3850mm	4150mm	With timber packer within the bearing. Full length.

First Floor Steel Beams Schedule

Number	Style	Length	Notes
B25F01	150x150 UC 37	152x152 UC 37	150mm from end of beam with timber packer within the bearing to cover 50% L4 length.
B25F02	150x150 UC 37	152x152 UC 37	150mm from end of beam with timber packer within the bearing to cover 50% L4 length.
B25F03	150x150 UC 37	152x152 UC 37	150mm from end of beam with timber packer within the bearing to cover 50% L4 length.
B25F04	150x150 UC 37	152x152 UC 37	150mm from end of beam with timber packer within the bearing to cover 50% L4 length.
B25F05	150x150 UC 37	152x152 UC 37	150mm from end of beam with timber packer within the bearing to cover 50% L4 length.
B25F06	150x150 UC 37	152x152 UC 37	150mm from end of beam with timber packer within the bearing to cover 50% L4 length.
B25F07	150x150 UC 37	152x152 UC 37	150mm from end of beam with timber packer within the bearing to cover 50% L4 length.
B25F08	150x150 UC 37	152x152 UC 37	150mm from end of beam with timber packer within the bearing to cover 50% L4 length.
B25F09	150x150 UC 37	152x152 UC 37	150mm from end of beam with timber packer within the bearing to cover 50% L4 length.
B25F10	150x150 UC 37	152x152 UC 37	150mm from end of beam with timber packer within the bearing to cover 50% L4 length.

FIRST FLOOR - PLOTS 3 & 4
(SHOWING STRUCTURE ABOVE)



STATUS: CONSTRUCTION

1183 - 304 B

STRUCTURAL ENGINEERING
Proposed Superstructure For Plots 3 & 4
Above Ground & First Floors

Project: Six Tunnel Farm, Gaddesden Row, Hemel Hempstead

Scale: 1:50 @ A1
Date: 17.10.11
Approved: JA

Client: 1 The Paragon, Hemel Hempstead, AL3 2HS, T: 01827 261211, F: 01827 261210, www.jatavis.co.uk

Group: Jatavis

Rev Amendment

Rev	Amendment	By	Date
P1 <td>First Issue</td> <td>CS7</td> <td>26.07.12</td>	First Issue	CS7	26.07.12
P2 <td>Window & door schedules amended as per Materials sheet drawings.</td> <td>CS7</td> <td>06.08.12</td>	Window & door schedules amended as per Materials sheet drawings.	CS7	06.08.12
A <td>Construction & length of beams B2 amended.</td> <td>CS7</td> <td>10.09.12</td>	Construction & length of beams B2 amended.	CS7	10.09.12
B <td>Window & door schedules amended as per Materials sheet drawings.</td> <td>CS7</td> <td>16.09.12</td>	Window & door schedules amended as per Materials sheet drawings.	CS7	16.09.12

Drawn by: [Name]
Checked by: [Name]
Approved by: [Name]