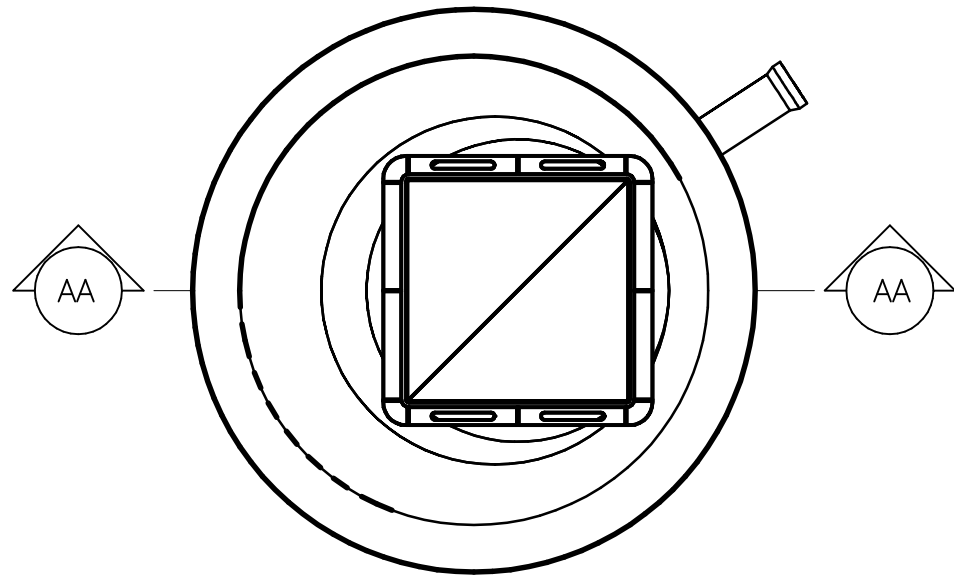
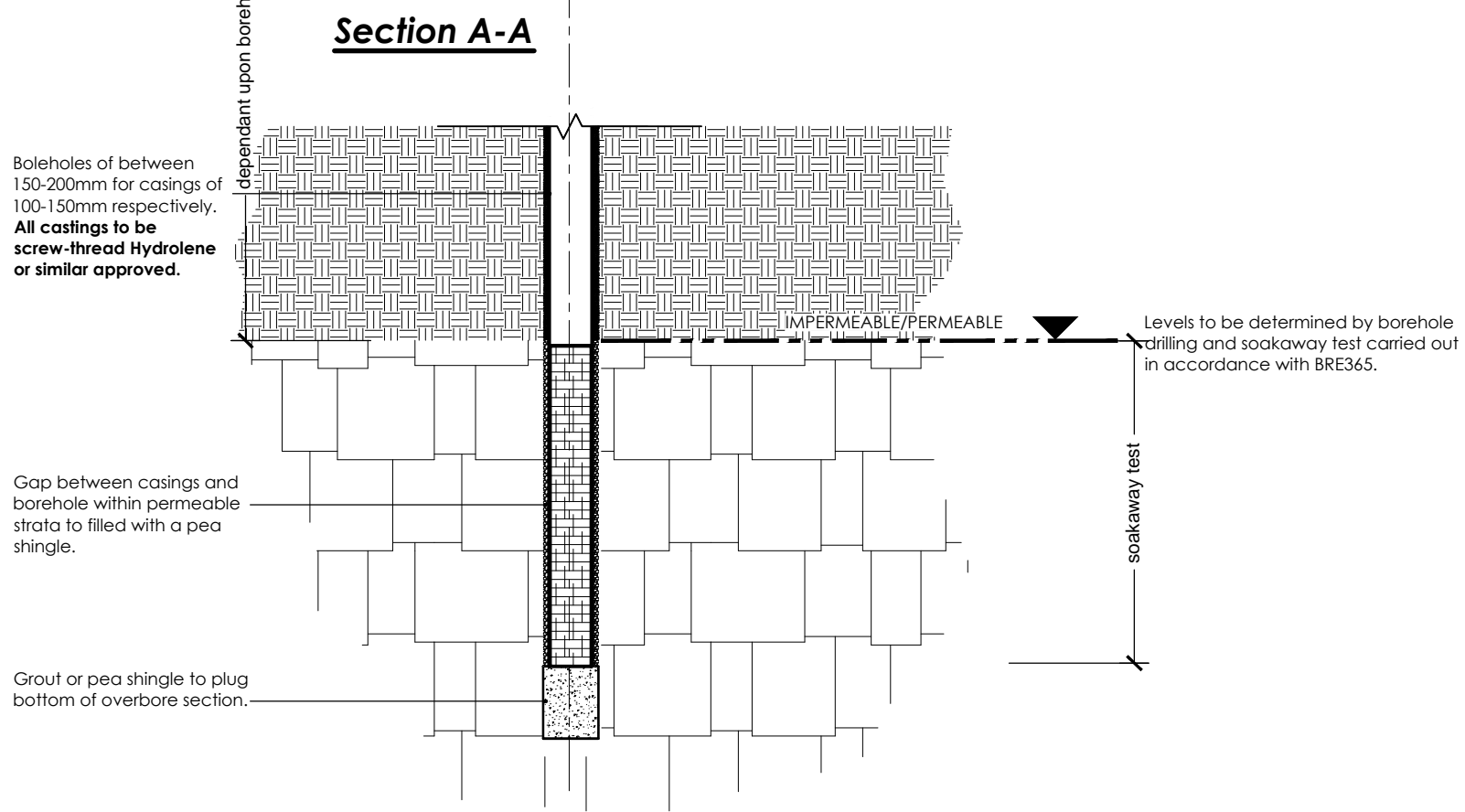


- Ductile iron cover and frame to BS EN124 and to be badged SW or FW, as applicable. Bedded on class M1, M2 or Epoxy mortar. Approved packing material may be used if required.
- Class M1, M2 or Epoxy mortar haunching to cover and frame
- Type 2 cover frame seating rings with 600x600 central access hole.
- Type 1 cover frame seating ring with 600x600 eccentric access hole (BS752-3) bedded on mortar.
- Reinforced concrete cover slab with 750x600 access (BS752-3) bedded with mortar.
- Precast concrete chamber sections to be bedded with mortar, propriety bitumen or resin mastic sealant.
- 150mm thick grade C20 concrete surround (sulphate resisting).
- 10mm uncompressed thickness of approved sealant to all horizontal joints.
- Inlet pipe. Check engineering layout for invert levels.
- Stainless steel (grade 316S31 BS5970) or polypropylene encapsulated all to BS1247 parts 1-2, double step rungs (280mm min. width at 250mm centres max). Max distance from cover level to first step 675mm.

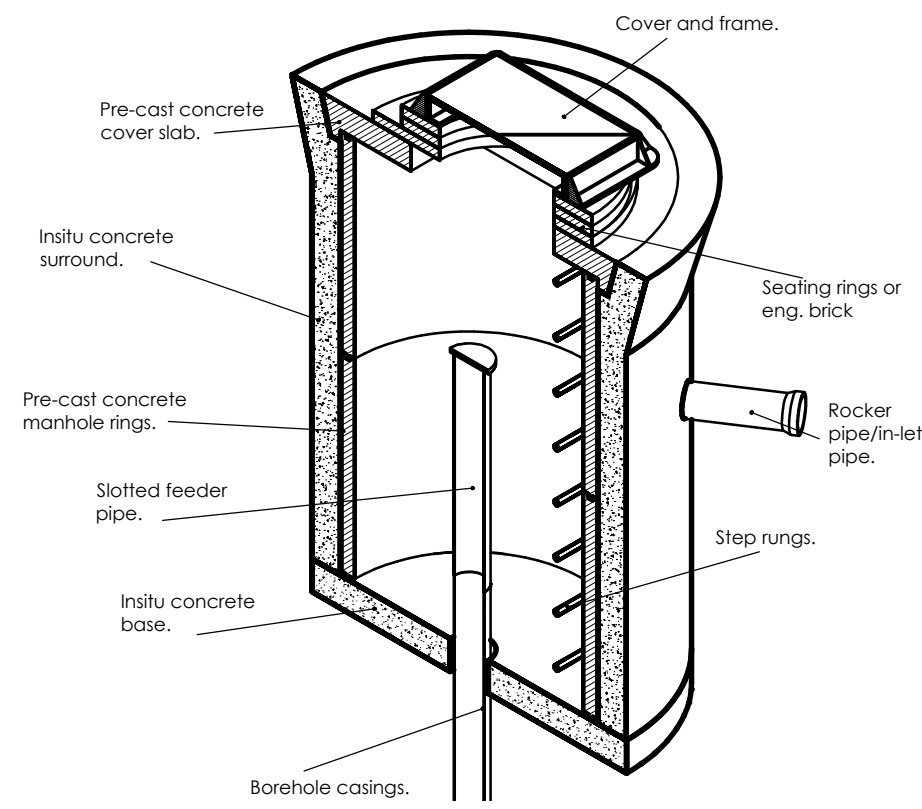


Plan


Rev	Description	By	Date
P1	First issue.	swf	08.06.11



- Access cap.
- Feeder pipe with slotted perforations, a 425µ geomesh inner filter and an outer protective layer.
- Gap between casings and borehole to be filled with a bentonite grout.
- Boleholes of between 150-200mm for casings of 100-150mm respectively. All castings to be screw-thread Hydrolene or similar approved.
- Gap between casings and borehole within permeable strata to be filled with a pea shingle.
- Grout or pea shingle to plug bottom of overbore section.
- Levels to be determined by borehole drilling and soakaway test carried out in accordance with BRE365.



Client



1 The Forresters,
 High Street,
 Harpenden, AL5 2FB.
 T. 01582 761211
 F. 01582 764100
 www.jarvisgrouppld.co.uk

Project
 46-48 Oakfield Road, Harpenden.

Job
 Civil Engineering

Drawing Title
Construction Details
 Borehole Soakaway

Scale	1:25 @ A3	Drawn	swf
Date	08.06.10	Checked	aa
Project No./Discipline	1035/SD/	Drawing No.	SW02
		Revision	P1

DRAWING STATUS: xxx