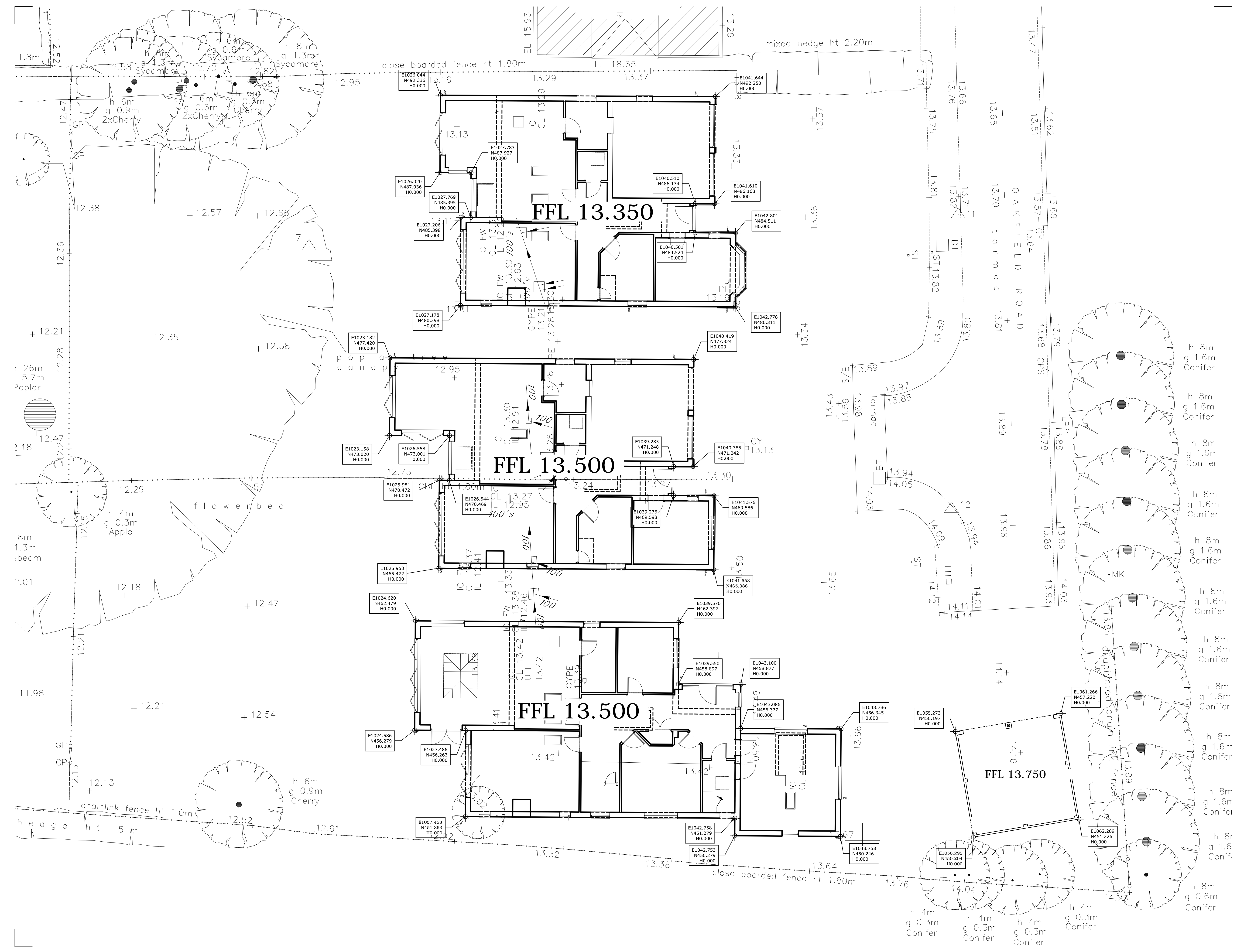


- General Engineering Notes**
- This drawing shall be read in conjunction with all other relevant architects and engineers drawings.
  - It is the contractors responsibility to locate existing services where they may be affected by proposed works.
  - Design and construction details for all new or amended vehicle crossings to be approved by Herts Highways.
  - Where private drives fall towards adoptable highways, surface water run off shall be prevented from draining onto public areas with the use of a ditch channel and yard gully or proprietary drainage channel located at the rear of adoptable footpath.
  - Where private drives fall towards private garages, a drainage channel with internal fall shall be used to prevent flooding of garages. Channels to be 'Acro' or similar approved.
  - 5" drj 115 x 115 x 115 mm Sa a + k B minimum falls of 1:80 unless noted otherwise.
  - All adoptable drainage shall be either clay, to BS55 with either socket or sleeve joint or concrete to BS911 part 1.
  - All domestic drainage beneath adoptable highways shall be verified clay extra strength and with concrete bed and surround should cover be less than 1200mm.
  - Any discrepancies, ambiguities or anomalies in the information provided on this or any of the engineering drawings package must be reported prior to work proceeding.
  - The last or disconnecting length of any building drainage system which connects to adoptable or Domestic Drainage shall be 1.5m.
  - Block paving in adoptable carriageways to be ??? by W ei F L b X U X c h e ( ) s \ Y F B j V e b Y d H B H b
  - Any service strips and areas within the road junctions (non footway or carriageway) shall be grassed.
  - Gullies shall not be placed within the limits of dropped crossings used by pedestrians or vehicles unless required for a low point.
  - Stop cock and meter covers shall not be located within vehicular crossing construction.



Suite 116, Milton Keynes Business Centre, Foxhunter Drive, Linford Wood, Milton Keynes, MK14 6GD. T: 01908 686855 F: 01908 410333 www.cistec.net e: info@cistec.net



Drawing  
**Setting Out**

Project  
46-48 Oakfield Road, Harpenden.

Scale  
1:100 @ A1

Date  
10.05.11

Approved

Drawing no.  
**1035/502 p1**

STATUS: PRELIMINARY

© The enclosed drawing and design remains the copyright of CISTEC Design LLP unless or until agreement is made in writing. This information may not be copied, distributed or changed in any form without prior written consent.