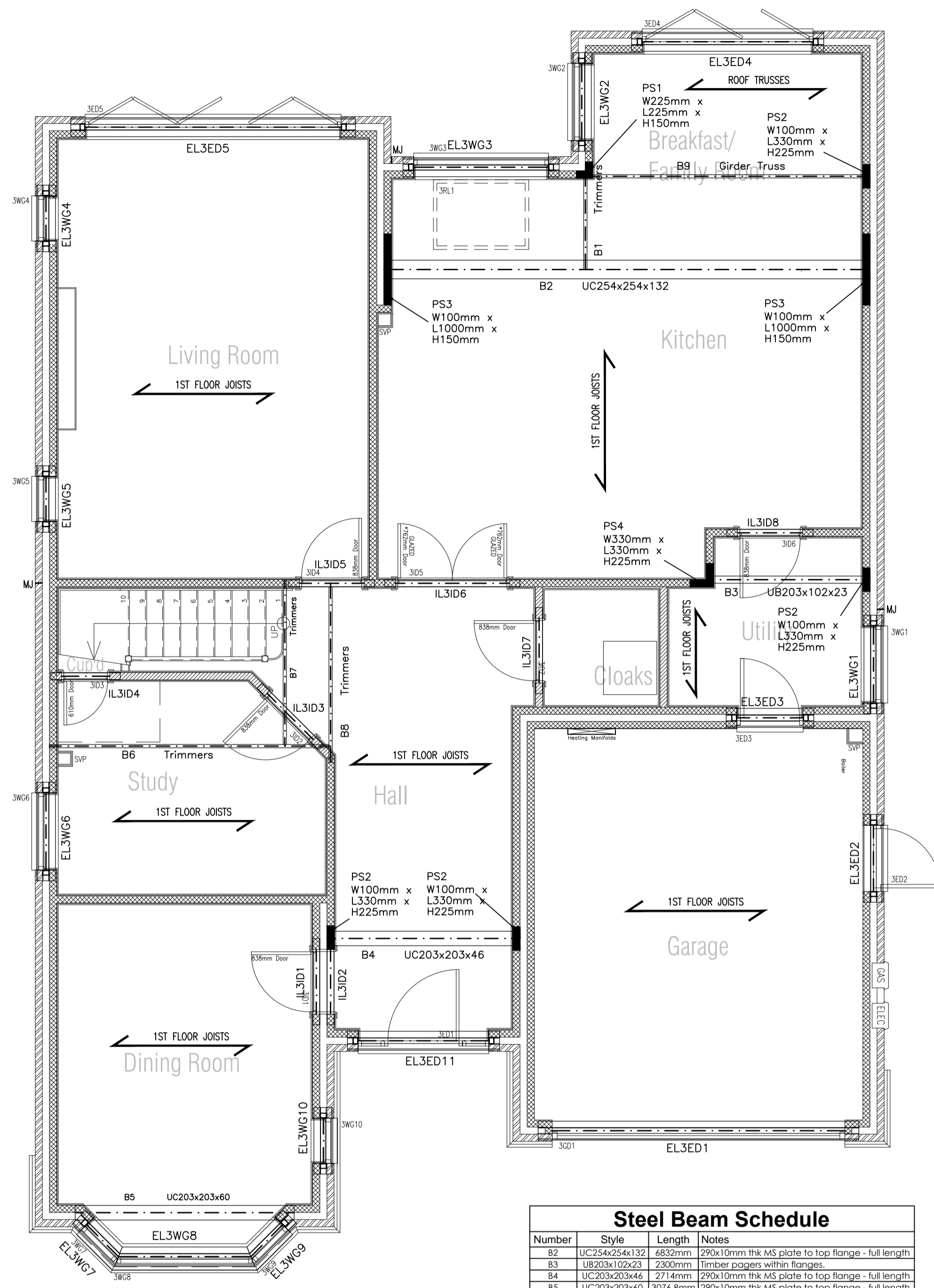


STRUCTURAL NOTES
 Please refer to all other design drawings by others.
 Please refer to drg. no. 1035/300 for specification and notes relating to structural engineering designs.
 Blockwork strengths to be as follows:-
 From top of foundation to u/s of 1st floor - 7.3N/mm²
 From 1st floor and above - 3.5 or 5N/mm²
STRUCTURAL KEY
 ← Span direction of infill members.
 MJ Movement joint in brickwork only (movement joints in blockwork by supplier).
 IL Internal box lintels.
 EL External cavity lintels.
 7.3N/mm² strength blockwork.
 3.5N/mm² or 5.0N/mm² strength blockwork.
 All lintels to be IG lintels of similar approved. Lintel sizes now confirmed.



Ground Floor
(showing structure above)

Steel Beam Schedule

Number	Style	Length	Notes
B2	UC254x254x132	6832mm	290x10mm thick MS plate to top flange - full length
B3	UB203x102x23	2300mm	Timber joists within flanges.
B4	UC203x203x46	2714mm	290x10mm thick MS plate to top flange - full length
B5	UC203x203x60	3076.8mm	290x10mm thick MS plate to top flange - full length

External Window Lintel Schedule

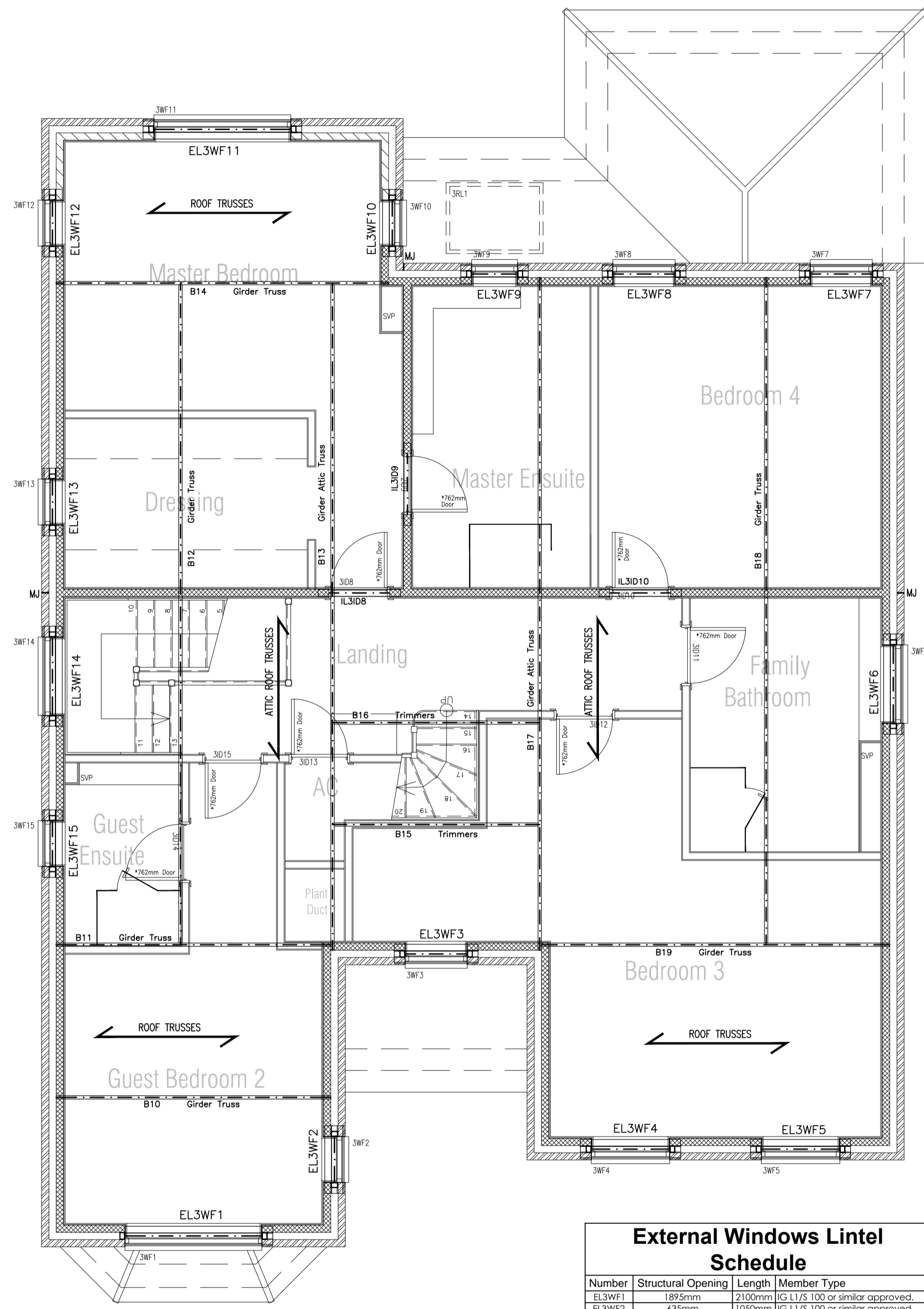
Number	Structural Opening	Length	Member Type
EL3WG1	1085mm	1500mm	IG L1/S 100 or similar approved.
EL3WG2	1085mm	1500mm	IG L1/S 100 or similar approved.
EL3WG3	1895mm	2250mm	IG L1/S 100 or similar approved.
EL3WG4	635mm	1050mm	IG L1/S 100 or similar approved.
EL3WG5	635mm	1050mm	IG L1/S 100 or similar approved.
EL3WG6	1085mm	1500mm	IG L1/S 100 or similar approved.
EL3WG7			IG Bay Window lintel & post system or similar approved.
EL3WG8			IG Bay Window lintel & post system or similar approved.
EL3WG9			IG Bay Window lintel & post system or similar approved.
EL3WG10	635mm	1050mm	IG L1/S 100 or similar approved.

External Door Lintel Schedule

Number	Structural Opening	Length	Member Type
EL3ED1	4112mm	4650mm	IG L6/S 100 or similar approved.
EL3ED2	932mm	1350mm	IG L1/S 100 or similar approved.
EL3ED3	932mm	1350mm	IG L1/S 100 or similar approved.
EL3ED4	2400mm	2700mm	IG L1/AHD 100 or similar approved.
EL3ED5	3600mm	4650mm	IG L6/S 100 or similar approved.
EL3ED11	1838mm	2250mm	IG L1/S 100 or similar approved.

Internal Lintel Schedule

Number	Structural Opening	Length	Member Type
IL3ID1	910mm	1350mm	IG HD Box 100 or similar approved.
IL3ID2	910mm	1350mm	IG HD Box 100 or similar approved.
IL3ID3	910mm	1350mm	IG Box 100 or similar approved.
IL3ID4	680mm	1050mm	IG Box 100 or similar approved.
IL3ID5	910mm	1350mm	IG Box 100 or similar approved.
IL3ID6	1620mm	1950mm	IG HD Box 100 or similar approved.
IL3ID7	910mm	1350mm	IG Box 100 or similar approved.
IL3ID8	910mm	1350mm	IG Box 100 or similar approved.



First Floor
(showing structure above)

External Windows Lintel Schedule

Number	Structural Opening	Length	Member Type
EL3WF1	1895mm	2100mm	IG L1/S 100 or similar approved.
EL3WF2	635mm	1050mm	IG L1/S 100 or similar approved.
EL3WF3	860mm	1200mm	IG L1/S 100 or similar approved.
EL3WF4	1085mm	1500mm	IG L1/S 100 or similar approved.
EL3WF5	1085mm	1500mm	IG L1/S 100 or similar approved.
EL3WF6	1085mm	1500mm	IG L1/S 100 or similar approved.
EL3WF7	860mm	1200mm	IG L1/AHD 100 or similar approved.
EL3WF8	860mm	1200mm	IG L1/AHD 100 or similar approved.
EL3WF9	635mm	1050mm	IG L1/AHD 100 or similar approved.
EL3WF10	635mm	1050mm	IG L1/S 100 or similar approved.
EL3WF11	1895mm	2250mm	IG L1/S 100 or similar approved.
EL3WF12	635mm	1050mm	IG L1/S 100 or similar approved.
EL3WF13	635mm	1050mm	IG L1/S 100 or similar approved.
EL3WF14	1085mm	1500mm	IG L1/S 100 or similar approved.
EL3WF15	635mm	1050mm	IG L1/S 100 or similar approved.

Internal Lintel Schedule

Number	Structural Opening	Length	Member Type
IL3ID9	840mm	1200mm	IG HD Box 100 or similar approved.
IL3ID9	840mm	1200mm	IG HD Box 100 or similar approved.
IL3ID10	840mm	1200mm	IG HD Box 100 or similar approved.

Rev Amendment

Rev	Amendment	By	Date
P1	First issue.	SWF	30.05.11
P2	Lintel sizes and type changed/confirmed. Layout titles added.	SWF	22.07.11



Suite 116, Milton Keynes Business Centre, Foxhunter Drive, Linton Wood, Milton Keynes, MK14 6GD.
 T. 01582 764100 F. 01582 764100 www.cistec.net e.info@cistec.net

Client

1 The Foresters, High Street, Harpenden, AL5 2FB, T. 01582 764111 F. 01582 764100 www.jarvisgroupplc.co.uk

Drawing
STRUCTURAL ENGINEERING
 Proposed Superstructure - plot 3
 Ground & First Floors
 Project
 46-48 Oakfield Road, Harpenden.
 Scale 1:50 @ A1 Date 30.05.11 Approved

Drawing no. **1035/305 p2**

STATUS: PRELIMINARY

© The enclosed drawing and design remains the copyright of CISTEC Design LLP unless or until agreement is made in writing. This information may not be copied, distributed or changed in any form without prior written consent.