

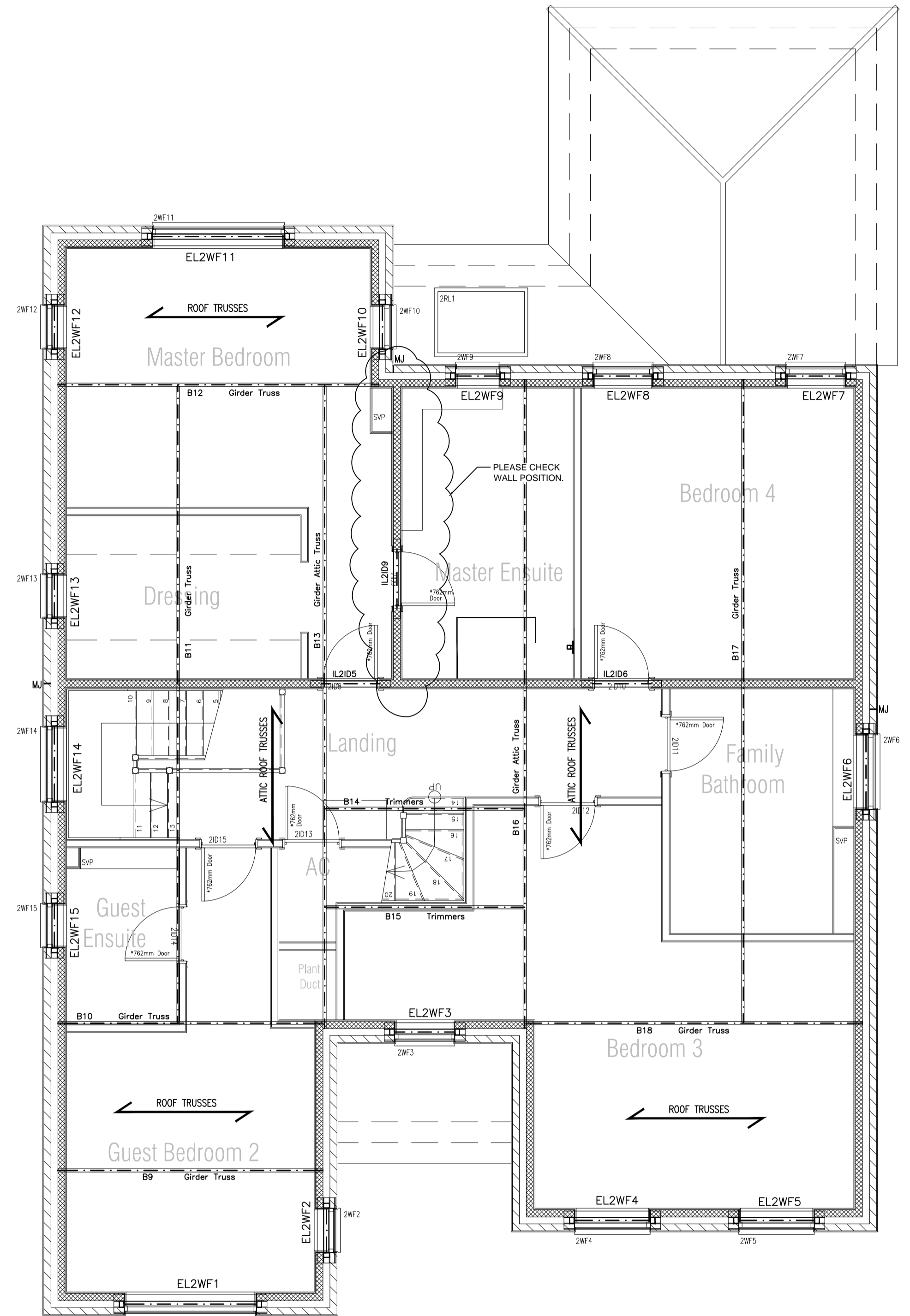
Ground Floor
(showing structure above)

Steel Beam Schedule			
Number	Style	Length	Notes
B2	UC254x254x132	6832mm	290x10mm thick MS plate to top flange - full length
B3	UB203x102x23	2900mm	
B4	UC203x203x46	2714mm	290x10mm thick MS plate to top flange - full length

External Window Lintel Schedule			
Number	Structural Opening	Length	Member Type
EL2WG1	1085mm	1500mm	IG L1/S 100 or similar approved.
EL2WG2	1895mm	2250mm	IG L1/S 100 or similar approved.
EL2WG3	635mm	1050mm	IG L1/S 100 or similar approved.
EL2WG4	635mm	1050mm	IG L1/S 100 or similar approved.
EL2WG5	1085mm	1500mm	IG L1/S 100 or similar approved.
EL2WG6	1895mm	2250mm	IG L1/S 100 or similar approved.
EL2WG7	635mm	1050mm	IG L1/S 100 or similar approved.

External Door Lintel Schedule			
Number	Structural Opening	Length	Member Type
EL2ED1	412mm	4650mm	IG L6/S 100 or similar approved.
EL2ED2	932mm	1350mm	IG L1/HD 100 or similar approved.
EL2ED3	932mm	1350mm	IG L1/S 100 or similar approved.
EL2ED4	2400mm	2700mm	IG L1/S 100 or similar approved.
EL2ED5	2400mm	2700mm	IG L1/HD 100 or similar approved.
EL2ED6	3450mm	4950mm	IG L6/S 100 or similar approved.
EL2ED11	1838mm	2250mm	IG L1/S 100 or similar approved.

Internal Lintel Schedule			
Number	Structural Opening	Length	Member Type
IL2ID1	910mm	1350mm	IG HD Box 100 or similar approved.
IL2ID2	910mm	1350mm	IG HD Box 100 or similar approved.
IL2ID3	910mm	1350mm	IG Box 100 or similar approved.
IL2ID4	680mm	1050mm	IG HD Box 100 or similar approved.
IL2ID5	910mm	1350mm	IG Box 100 or similar approved.
IL2ID6	1400mm	1950mm	IG HD Box 100 or similar approved.
IL2ID7	910mm	1350mm	IG Box 100 or similar approved.
IL2ID8	910mm	1350mm	IG Box 100 or similar approved.



First Floor
(showing structure above)

External Windows Lintel Schedule			
Number	Structural Opening	Length	Member Type
EL2WF1	1895mm	2250mm	IG L1/S 100 or similar approved.
EL2WF2	635mm	1050mm	IG L1/S 100 or similar approved.
EL2WF3	860mm	1200mm	IG L1/S 100 or similar approved.
EL2WF4	1085mm	1500mm	IG L1/S 100 or similar approved.
EL2WF5	1085mm	1500mm	IG L1/S 100 or similar approved.
EL2WF6	1085mm	1500mm	IG L1/S 100 or similar approved.
EL2WF7	860mm	1200mm	IG L1/HD 100 or similar approved.
EL2WF8	860mm	1200mm	IG L1/HD 100 or similar approved.
EL2WF9	635mm	1050mm	IG L1/HD 100 or similar approved.
EL2WF10	635mm	1050mm	IG L1/S 100 or similar approved.
EL2WF11	1895mm	2250mm	IG L1/S 100 or similar approved.
EL2WF12	635mm	1050mm	IG L1/S 100 or similar approved.
EL2WF13	635mm	1050mm	IG L1/S 100 or similar approved.
EL2WF14	1085mm	1500mm	IG L1/S 100 or similar approved.
EL2WF15	635mm	1050mm	IG L1/S 100 or similar approved.

Internal Lintel Schedule			
Number	Structural Opening	Length	Member Type
IL2ID9	840mm	1200mm	IG HD Box 100 or similar approved.
IL2ID9	840mm	1200mm	IG HD Box 100 or similar approved.
IL2ID9	840mm	1200mm	IG HD Box 100 or similar approved.

STRUCTURAL NOTES

Please refer to all other design drawings by others.

Please refer to drg. no. 1035/300 for specification and notes relating to structural engineering designs.

Blockwork strengths to be as follows:-

From top of foundation to u/s of 1st floor - 7.3N/mm²
From 1st floor and above - 3.5 or 5N/mm²

STRUCTURAL KEY

Span direction of infill members.

MJ Movement joint in brickwork only (movement joints in blockwork by supplier).

IL Internal box lintels.

EL External cavity lintels.

7.3N/mm² strength blockwork.

3.5N/mm² or 5.0N/mm² strength blockwork.

All lintels to be IG lintels of similar approved. Lintel sizes now confirmed.

Rev	Amendment	By	Date
P1	First issue.	SWF	30.05.11
P2	Lintel sizes and type changed/confirmed. Layout titles added.	SWF	22.07.11

CISTEC
CHARTERED CIVIL & STRUCTURAL ENGINEERING CONSULTANTS

Suite 116, Milton Keynes Business Centre, Foxhunter Drive, Linford Wood, Milton Keynes, MK14 6GD.
T. 01582 764100 F. 01582 764100 www.cistec.net e.info@cistec.net

Client **Jarvis Group**

1 The Forresters, High Street, Harpenden, AL5 2PB.
T. 01582 761211 F. 01582 764100 www.jarvisgroup.co.uk

Drawing **STRUCTURAL ENGINEERING**
Proposed Superstructure - plot 2
Ground & First Floors

Project 46-48 Oakfield Road, Harpenden.

Scale 1:50 @ A1 Date 30.05.11 Approved

Drawing no. **1035/303 p2**

STATUS: PRELIMINARY

© The enclosed drawing and design remains the copyright of CISTEC Design LLP unless or until agreement is made in writing. This information may not be copied, distributed or changed in any form without prior written consent.