

STRUCTURAL NOTES

Please refer to all other design drawings by others.

Please refer to drg. no. 1035/300 for specification and notes relating to structural engineering designs.

Blockwork strengths to be as follows:-

From top of foundation to u/s of 1st floor - 7.3N/mm²
 From 1st floor and above - 3.5 or 5N/mm²

STRUCTURAL KEY

Span direction of infill members.

MJ Movement joint in brickwork only (movement joints in blockwork by supplier).

IL Internal box lintels.

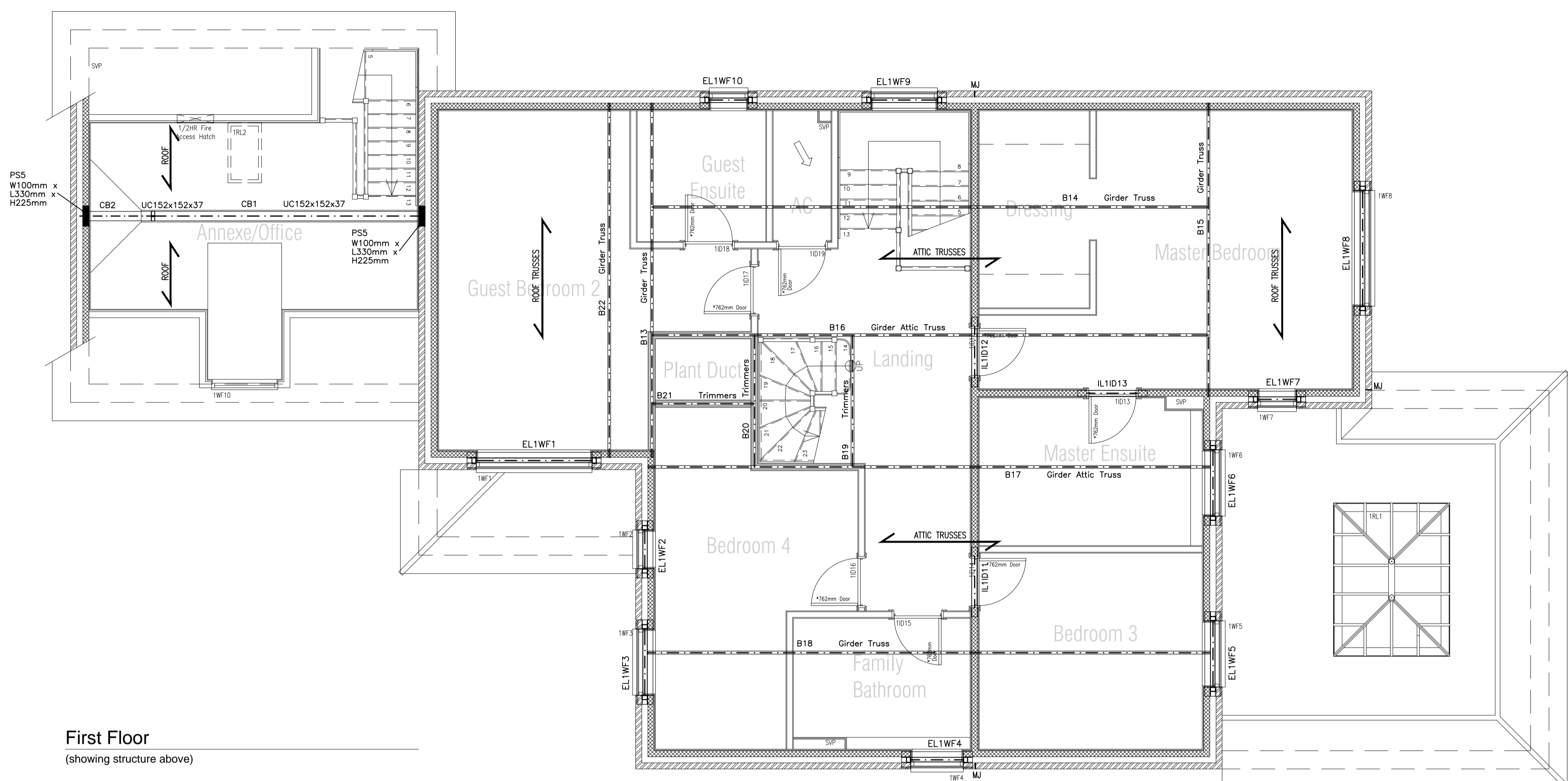
EL External cavity lintels.

7.3N/mm² strength blockwork.

3.5N/mm² or 5.0N/mm² strength blockwork.

All lintels to be IG lintels of similar approved. Lintel sizes now confirmed.

A1



First Floor
(showing structure above)

Cranked Steel Beam Schedule

Number	Style	Length	Comments
CB1	UC152x152x37	4480mm	Cranked steel, to be fabricated.
CB2	UC152x152x37	1528.1mm	Cranked steel, to be fabricated.

External Window Lintel Schedule

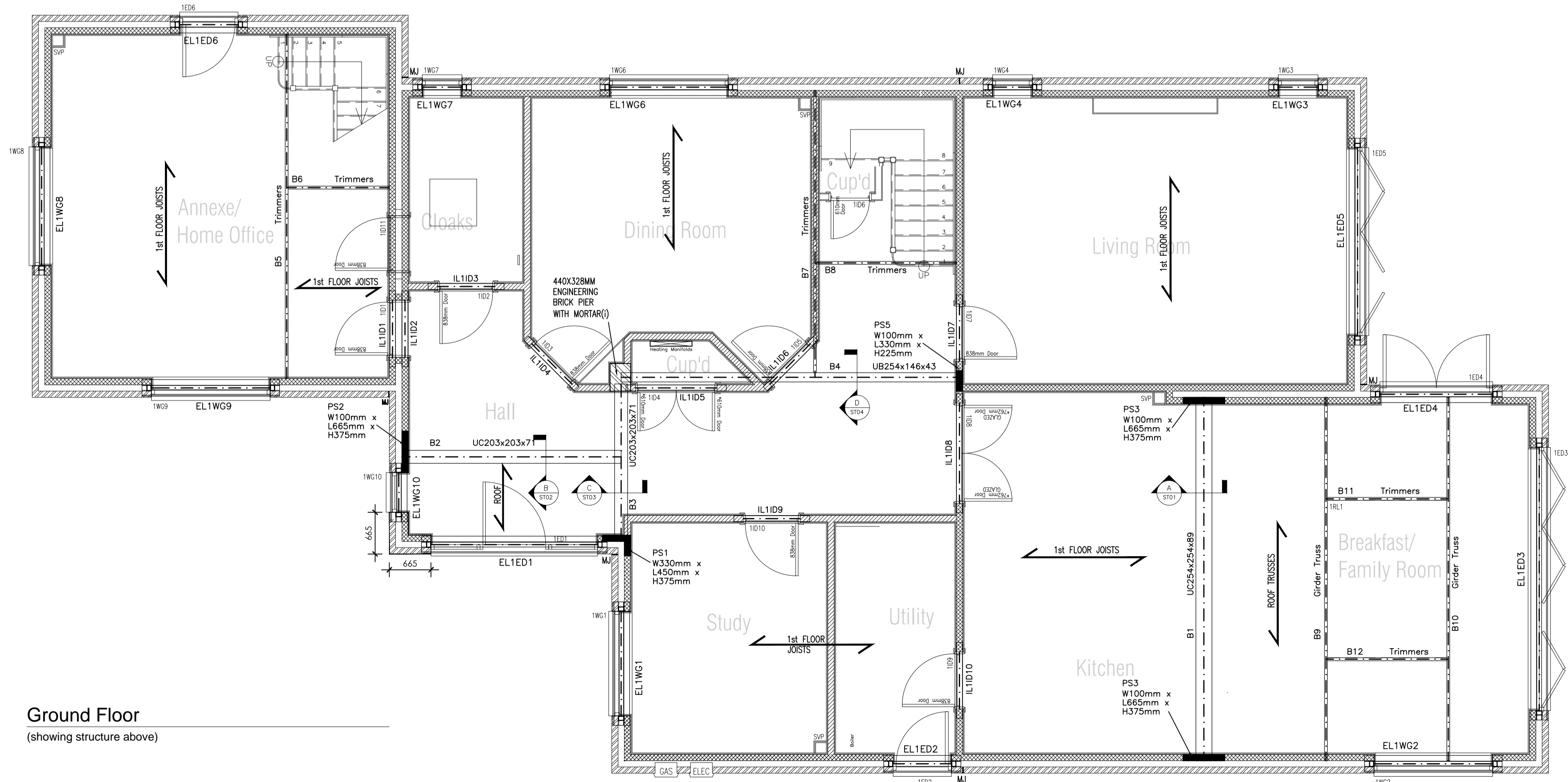
Number	Structural Opening	Length	Member Type
EL1WF1	1895mm	2250mm	IG L1/HD 100 or similar approved.
EL1WF2	635mm	1050mm	IG L1/HD 100 or similar approved.
EL1WF3	1085mm	1500mm	IG L1/XHD 100 or similar approved.
EL1WF4	840mm	1200mm	IG L1/S 100 or similar approved.
EL1WF5	1085mm	1500mm	IG L1/XHD 100 or similar approved.
EL1WF6	1085mm	1500mm	IG L1/XHD 100 or similar approved.
EL1WF7	635mm	1050mm	IG L1/S 100 or similar approved.
EL1WF8	1895mm	2250mm	IG L1/S 100 or similar approved.
EL1WF9	1085mm	1500mm	IG L1/S 100 or similar approved.
EL1WF10	635mm	1050mm	IG L1/S 100 or similar approved.

Internal Lintel Schedule

Number	Structural Opening	Length	Member Type
IL1ID1	840mm	1200mm	IG HD Box 100 or similar approved.
IL1ID2	840mm	1200mm	IG HD Box 100 or similar approved.
IL1ID3	840mm	1200mm	IG Box 100 or similar approved.

Rev Amendment

Rev	Amendment	By	Date
P1	First issue.	SWF	30.05.11
P2	Lintels sizes and type changed/confirmed. Section call outs added. Layout titles added.	SWF	22.07.11



Ground Floor
(showing structure above)

Steel Beams Schedule

Number	Style	Length	Notes
B1	UC254x254x89	3800mm	290x10mm thick MS plate to top flange - full length.
B2	UC203x203x71	3320mm	290x10mm thick MS plate to top flange - full length.
B3	UC203x203x71	2515.2mm	290x10mm thick MS plate to top flange - part length under wall.
B4	UB254x146x43	5449.4mm	

External Window Lintel Schedule

Number	Structural Opening	Length	Member Type
EL1WG1	1670mm	2100mm	IG L1/S 100 or similar approved.
EL1WG2	1895mm	2250mm	IG L1/HD 100 or similar approved.
EL1WG3	635mm	1050mm	IG L1/S 100 or similar approved.
EL1WG4	635mm	1050mm	IG L1/S 100 or similar approved.
EL1WG5	1895mm	2250mm	IG L1/S 100 or similar approved.
EL1WG6	635mm	1050mm	IG L1/S 100 or similar approved.
EL1WG7	1895mm	2250mm	IG L1/S 100 or similar approved.
EL1WG8	1895mm	2250mm	IG L1/S 100 or similar approved.
EL1WG9	1895mm	2250mm	IG L1/S 100 or similar approved.
EL1WG10	635mm	1050mm	IG L1/S 100 or similar approved.

External Doors Lintel Schedule

Number	Structural Opening	Length	Member Type
EL1ED1	2660mm	3000mm	IG L1/S 100 or similar approved.
EL1ED2	932mm	1350mm	IG L1/S 100 or similar approved.
EL1ED3	4200mm	4500mm	IG L1/S 100 or similar approved.
EL1ED4	1800mm	2100mm	IG L1/XHD 100 or similar approved.
EL1ED5	3000mm	3450mm	IG L1/S 100 or similar approved.
EL1ED6	932mm	1350mm	IG L1/XHD 100 or similar approved.

Internal Lintel Schedule

Number	Structural Opening	Length	Member Type
IL1ID1	910mm	1350mm	IG Box 100 or similar approved.
IL1ID2	910mm	1350mm	IG Box 100 or similar approved.
IL1ID3	910mm	1350mm	IG Box 100 or similar approved.
IL1ID4	910mm	1200mm	IG Box 100 or similar approved.
IL1ID5	1300mm	1650mm	IG Box 100 or similar approved.
IL1ID6	910mm	1200mm	IG Box 100 or similar approved.
IL1ID7	910mm	1350mm	IG HD Box 100 or similar approved.
IL1ID8	1600mm	1950mm	IG HD Box 100 or similar approved.
IL1ID9	910mm	1350mm	IG Box 100 or similar approved.
IL1ID10	910mm	1350mm	IG HD Box 100 or similar approved.

CISTEC
 CHARTERED CIVIL & STRUCTURAL ENGINEERING CONSULTANTS

Suite 116, Milton Keynes Business Centre, Foxhunter Drive, Linford Wood, Milton Keynes, MK14 6GD.
 T: 01582 764100 F: 01582 764100 www.cistec.net e: info@cistec.net

Jarvis Group
 1 The Foresters, High Street, Harpenden, AL5 2FB.
 T: 01582 764100 F: 01582 764100 www.jarvisgroup.co.uk

Drawing
STRUCTURAL ENGINEERING
 Proposed Superstructure - plot 1
 Ground & First Floors

Project
 46-48 Oakfield Road, Harpenden.

Scale 1:50 @ A1 Date 30.05.11 Approved

Drawing no. **1035/301 p2**

STATUS: PRELIMINARY

© The enclosed drawing and design remains the copyright of CISTEC Design LLP unless or until agreement is made in writing. This information may not be copied, distributed or changed in any form without prior written consent.