

**STRUCTURAL NOTES**

Please refer to all other design drawings by others.  
Please refer to drg. no. 1088/300 for specification and notes relating to structural engineering designs.

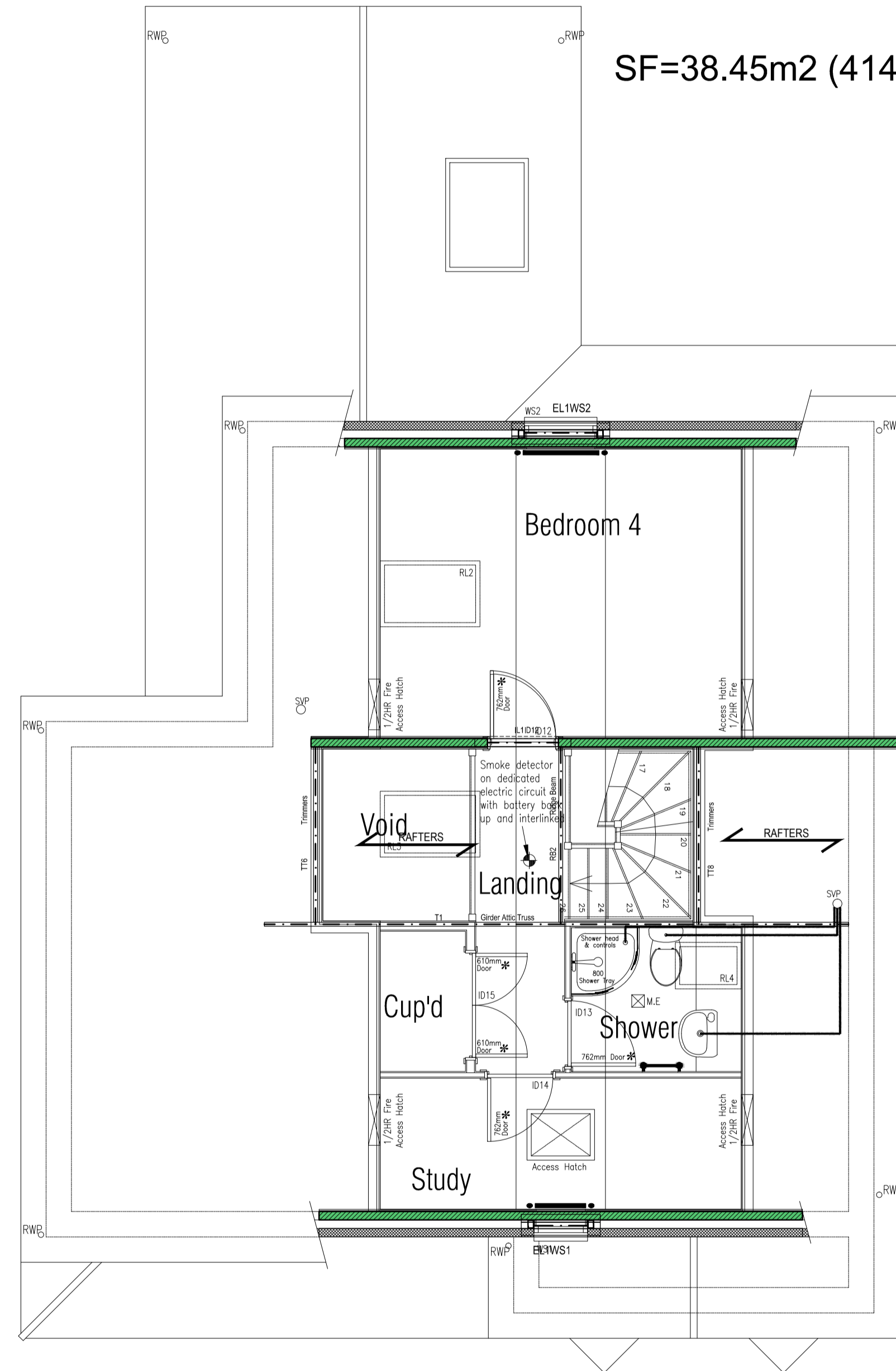
Blockwork strengths to be as follows: -  
From top of foundation to u/s of 1st floor - 7.3N/mm<sup>2</sup>  
From 1st floor and above - 3.5 or 5N/mm<sup>2</sup>

**STRUCTURAL KEY**

- Span direction of infill members.
- MJ Movement joint in brickwork only (movement joints in blockwork by supplier).
- IL Internal box lintels.
- EL External cavity lintels.
- 7.3N/mm<sup>2</sup> strength blockwork.
- 3.5N/mm<sup>2</sup> or 5.0N/mm<sup>2</sup> strength blockwork.
- Engineering brickwork.

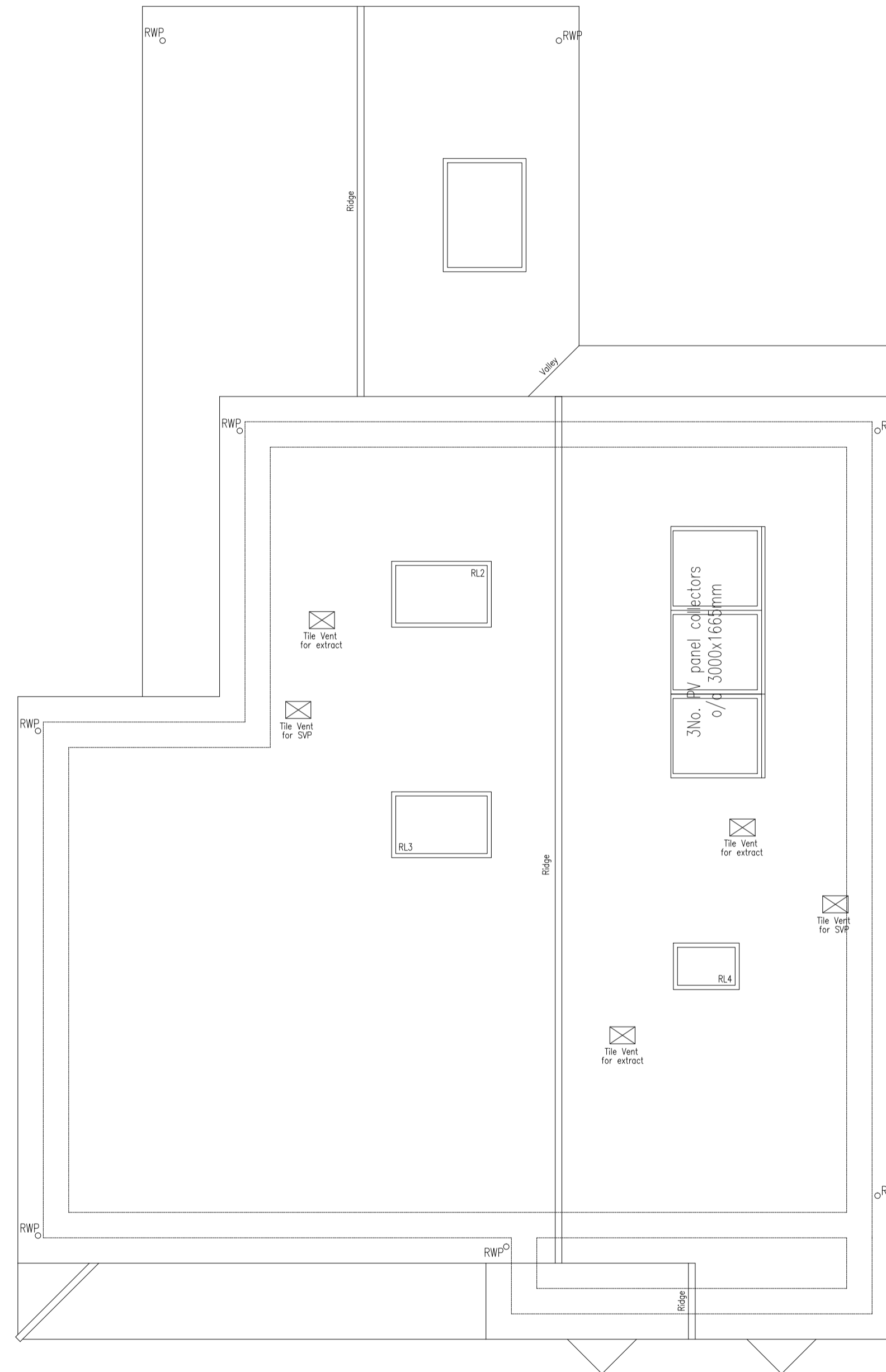
All lintels to be IG lintels of similar approved. Lintel sizes to be confirmed.

SF=38.45m2 (414sqft)



SECOND FLOOR

Second Floor  
(showing structure above)



ROOF PLAN

Roof

**Second Floor Window Lintel Schedule**

Number	Structural Opening	Length	Member Type
EL1WS1	635mm	1050mm	IG L1/S 100 or similar approved.
EL1WS2	860mm	1200mm	IG L1/S 100 or similar approved.

**Second Floor Internal Lintel Schedule**

Number	Structural Opening	Length	Member Type
IL1ID7	840mm	1200mm	IG Box 100 or similar approved.

Rev	Amendment	By	Date
P1	First issue.	SWF	17.10.11
P2	Lintels added.	SWF	11.11.11
P3	Blockwork wall removed. Lintel removed. Girder truss added.	SWF	11.11.11
A	Issued as CONSTRUCTION issue.	SWF	13.12.11



Suite 116, Milton Keynes Business Centre, Foxhunter Drive,  
Linford Wood, Milton Keynes, MK14 6GD.  
L01908 086855 T 01908 410333 www.cistec.net e info@cistec.net

Client

1 The Forresters,  
High Street,  
Harpenden, AL5 2FB,  
T. 01582 761211  
F. 01582 764100  
www.jarvisgrouppld.co.uk

Drawing  
**STRUCTURAL ENGINEERING**  
Proposed Superstructure  
Second Floor & Roof  
Project  
11 Jameson Road, Harpenden.

Scale 1:50 @ A1 Date 17.10.11 Approved

Drawing no. **1088/302A**

© The enclosed drawing and design remains the copyright of CISTEC Design LLP unless or until agreement is made in writing. This information may not be copied, distributed or changed in any form without prior written consent.

STATUS: CONSTRUCTION