

Please refer to all other design drawings by others.  
Please refer to drg. no. 1088/300 for specification and notes relating to structural engineering designs.

Blockwork strengths to be as follows:-

From top of foundation to u/s of 1st floor - 7.3N/mm<sup>2</sup>  
From 1st floor and above - 3.5 or 5N/mm<sup>2</sup>

STRUCTURAL KEY

- Span direction of infill members.
- MJ Movement joint in brickwork only (movement joints in blockwork by supplier).
- IL Internal box lintels.
- EL External cavity lintels.
- 7.3N/mm<sup>2</sup> strength blockwork.
- 3.5N/mm<sup>2</sup> or 5.0N/mm<sup>2</sup> strength blockwork.
- Engineering brickwork.

All lintels to be IG lintels of similar approved. Lintel sizes to be confirmed.

**Ground Floor Window Lintel Schedule**

Number	Structural Opening	Length	Member Type
EL1WG1	1895mm	2250mm	IG L1/S 100 or similar approved.
EL1WG2	633mm	900mm	IG L1/S 100 or similar approved.
EL1WG3	1888mm	2100mm	IG L1/S 100 or similar approved.
EL1WG4	633mm	900mm	IG L1/S 100 or similar approved.
EL1WG5	633mm	1050mm	IG L1/S 100 or similar approved.
EL1WG6	1895mm	2250mm	IG L1/HD 100 or similar approved.
EL1WG7	633mm	1050mm	IG L1/S 100 or similar approved.

**First Floor Window Lintel Schedule**

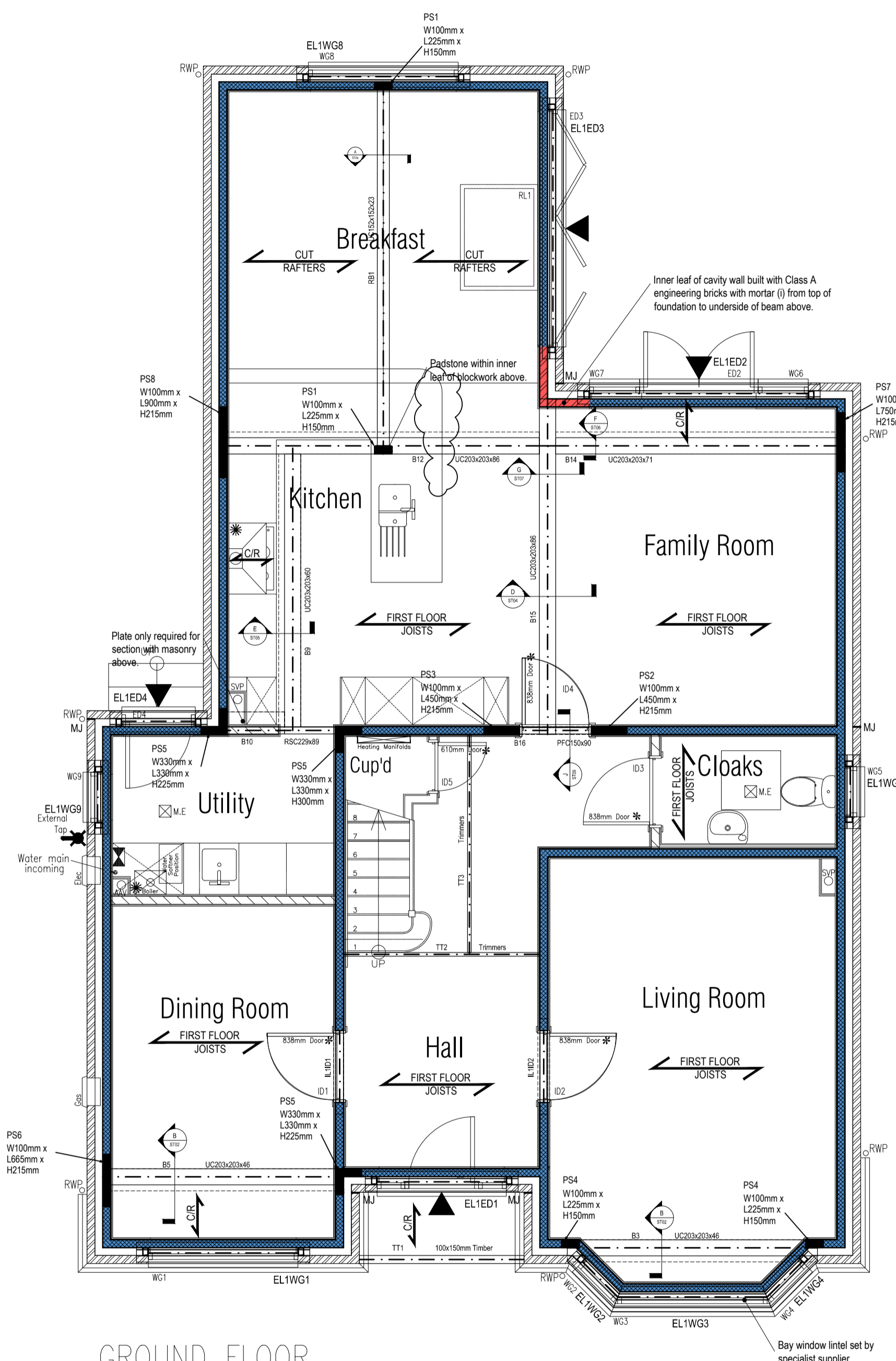
Number	Structural Opening	Length	Member Type
EL1WF1	1895mm	2250mm	IG L1/HD 100 or similar approved.
EL1WF2	1895mm	2250mm	IG L1/HD 100 or similar approved.
EL1WF3	860mm	1200mm	IG L1/S 100 or similar approved.
EL1WF4	633mm	1050mm	IG L1/S 100 or similar approved.
EL1WF5	1895mm	2250mm	IG L1/HD 100 or similar approved.
EL1WF6	633mm	1050mm	IG L1/S 100 or similar approved.

**Ground Floor Doors Lintel Schedule**

Number	Structural Opening	Length	Member Type
EL1ED1	1635mm	1950mm	IG L1/HD 100 or similar approved.
EL1ED2	2770mm	3150mm	IG L1/S 100 or similar approved.
EL1ED3	3005mm	3450mm	IG L1/HD 100 or similar approved.
EL1ED4	932mm	1350mm	IG L1/S 100 or similar approved.

**Internal Lintel Schedule**

Number	Structural Opening	Length	Member Type
IL1ID1	910mm	1350mm	IG Box 100 or similar approved.
IL1ID2	910mm	1350mm	IG Box 100 or similar approved.
IL1ID3	840mm	1200mm	IG Box 100 or similar approved.



GROUND FLOOR

Ground Floor  
(showing structure above)

**Ground Floor Steel Beams Schedule**

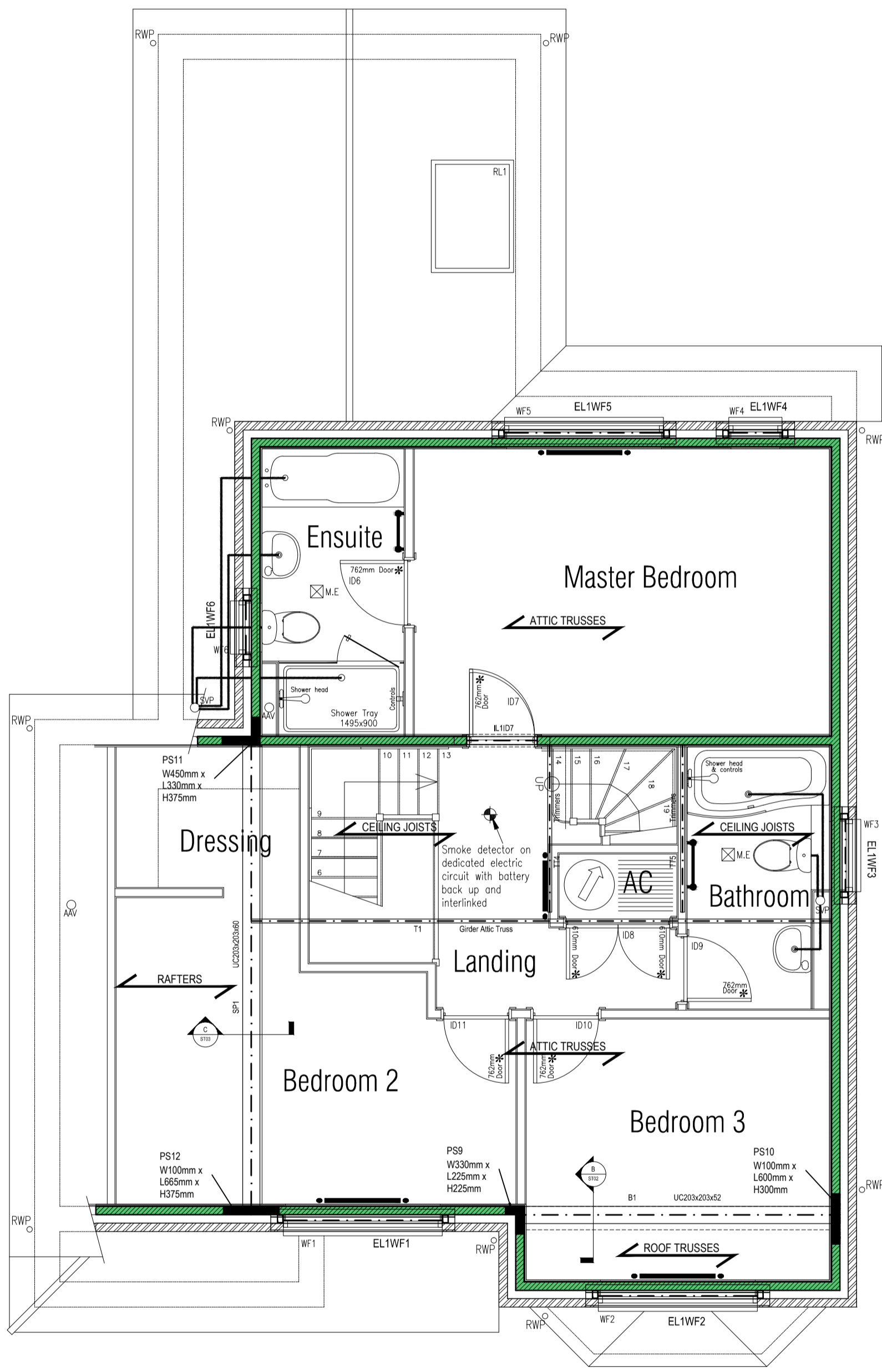
Number	Member	Length	Notes
B3	UC203x203x46	3167.3mm	With 12x280mm plate welded to bottom flange, full length
B5	UC203x203x46	3050mm	With 12x280mm plate welded to bottom flange, full length
B9	UC203x203x60	4574.5mm	With 12x280mm plate welded to bottom flange, full length
B10	R5C229x89	1627mm	With 12x280mm plate welded to bottom flange, PART length.
B12	UC203x203x86	4160.4mm	With 12x280mm plate welded to bottom flange, full length.
B14	UC203x203x11	3766.6mm	With 12x280mm plate welded to bottom flange, full length.
B15	UC203x203x86	4250.8mm	With 12x280mm plate welded to bottom flange, full length.

**Steel Pirlins Schedule**

Number	Member	Length	Notes
SP1	UC203x203x60	5700mm	?

**Steel Ridge Beams Schedule**

Number	Member	Length	Notes
RB1	UC152x152x23	4714.2mm	?



FIRST FLOOR

First Floor  
(showing structure above)

**First Floor Steel Beams Schedule**

Number	Member	Length	Notes
B1	UC203x203x52	3865mm	With 12x280mm plate welded to bottom flange, full length

**Rev Amendment**

Rev	Amendment	By	Date
P1	First issue.	SWF	17.10.11
P2	Blockwork strength changed for ground floor. Lintels added. Additional detail section markers added. Beam B15 up-graded in terms of steel thickness. Padstones amended and additionally noted.	SWF	11.11.11
P3	Beam B16 moved to underside of beam B15 above with no padstone. New detail marker added.	SWF	11.11.11
P4	Double beams changed to single beams with welded plate to bottom. Beams removed and beams changed in length. Notes added. Detail section reference for 'H-H' removed.	SWF	07.12.11
A	Duplicate detail reference 'E' (ST05) removed. Issued as CONSTRUCTION issue.	SWF	13.12.11



Suite 116, Milton Keynes Business Centre, Foxhunter Drive, Linton Wood, Milton Keynes, MK14 6GD.  
L01908 086855 T 01908 410333 www.cistec.net e info@cistec.net

Client

1 The Forresters, High Street, Harpenden, AL5 2FB.  
T. 01582 761211 F. 01582 764100 w. www.jarvisgrouppld.co.uk

Drawing  
**STRUCTURAL ENGINEERING**  
Proposed Superstructure  
Ground & First Floors

Project  
11 Jameson Road, Harpenden.

Scale 1:50 @ A1 Date 17.10.11 Approved

Drawing no. **1088/301A**

STATUS: CONSTRUCTION