

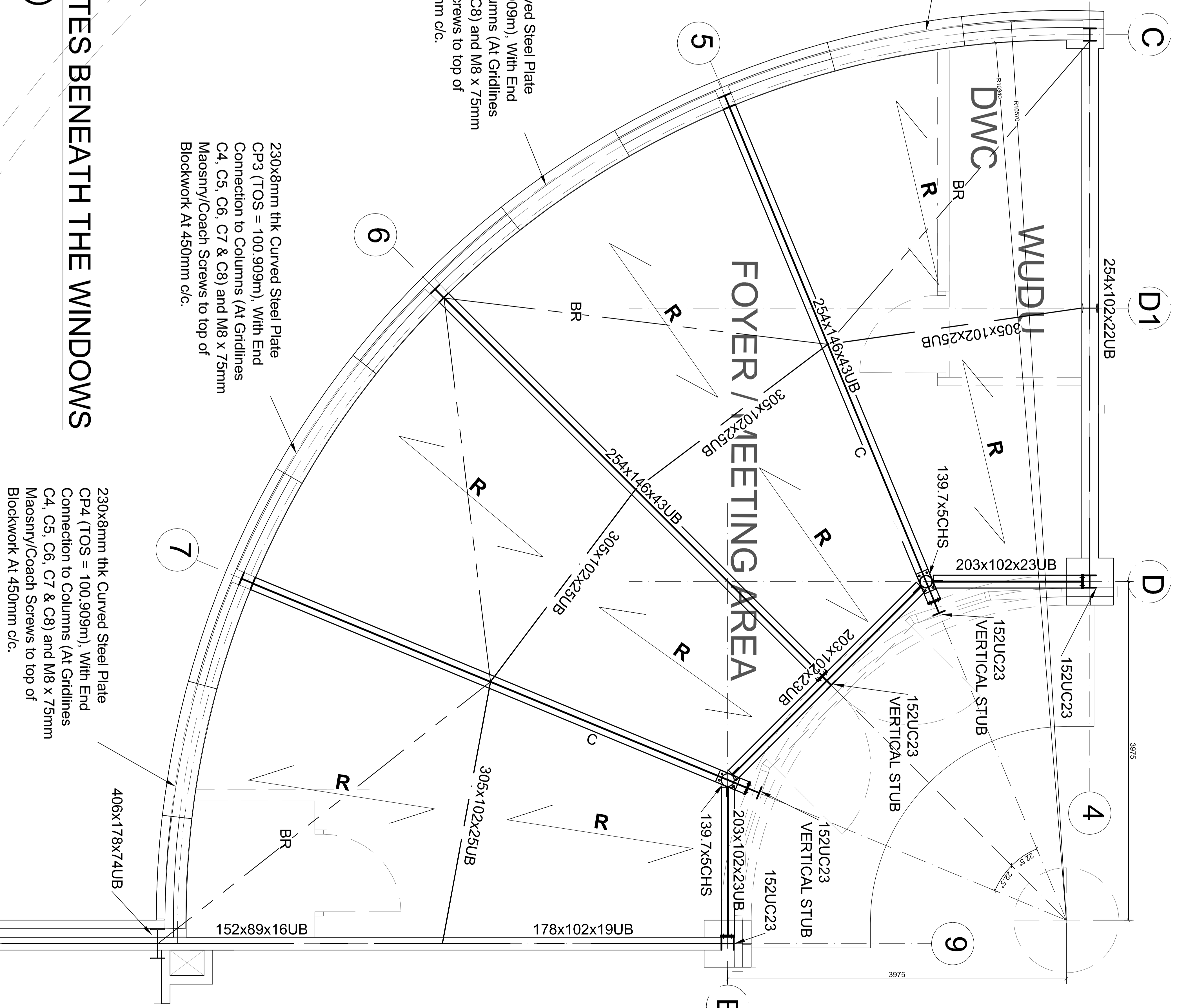
**FOYER / MEETING AREA**  
 CURVED CANOPY OVER MAIN ENTRANCE  
 (Scale 1:25)

230x8mm thk Curved Steel Plate  
 CP1 (TOS = 100.909mm), With End  
 Connection to Columns (At Gridlines  
 C4, C5, C6, C7 & C8) and M8 x 75mm  
 Masonry/Coach Screws to top of  
 Blockwork At 450mm c/c.

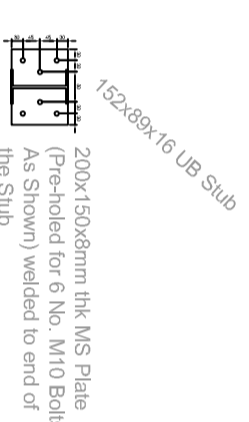
230x8mm thk Curved Steel Plate  
 CP2 (TOS = 100.909mm), With End  
 Connection to Columns (At Gridlines  
 C4, C5, C6, C7 & C8) and M8 x 75mm  
 Masonry/Coach Screws to top of  
 Blockwork At 450mm c/c.

230x8mm thk Curved Steel Plate  
 CP3 (TOS = 100.909mm), With End  
 Connection to Columns (At Gridlines  
 C4, C5, C6, C7 & C8) and M8 x 75mm  
 Masonry/Coach Screws to top of  
 Blockwork At 450mm c/c.

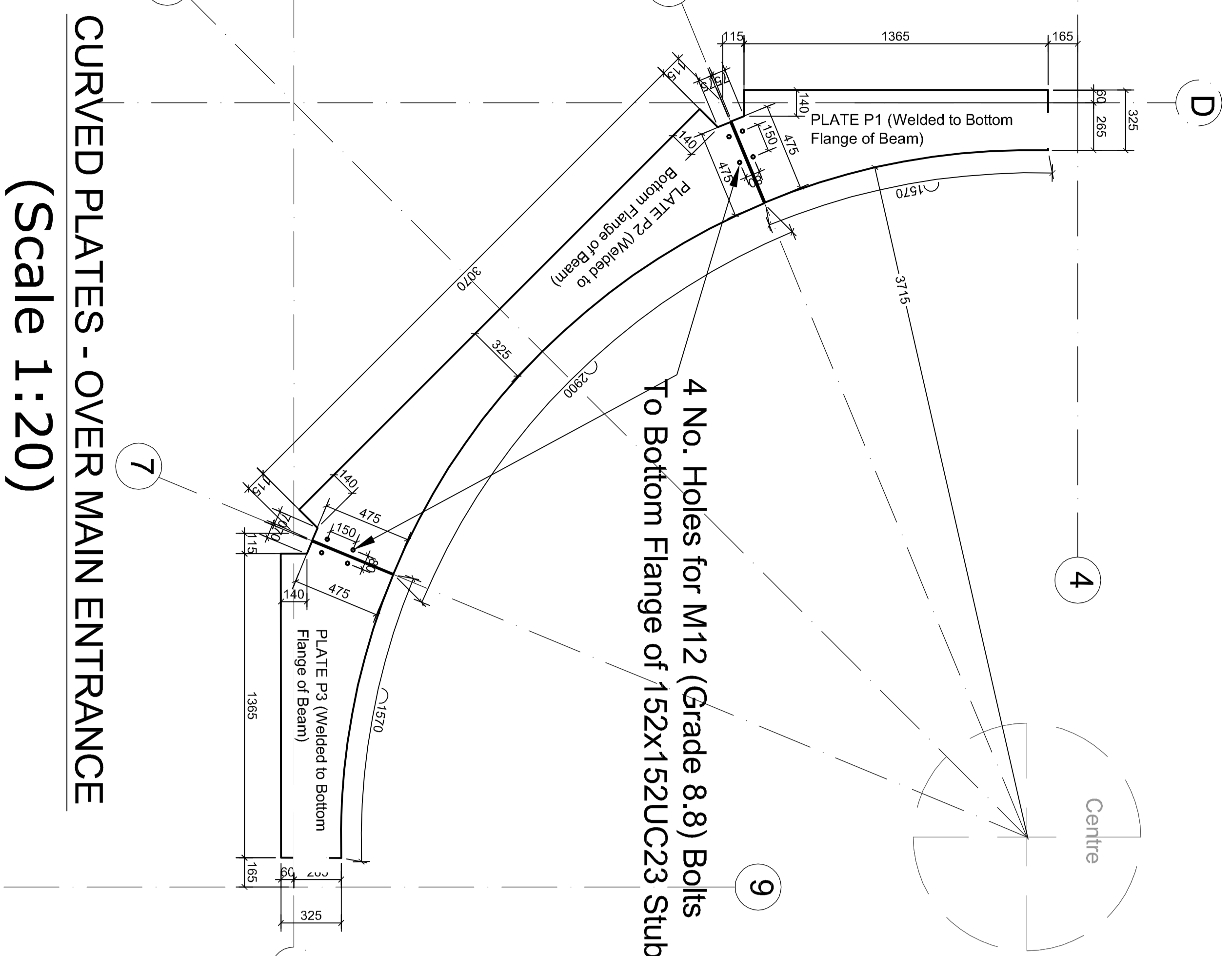
**CURVED PLATES BENEATH THE WINDOWS**  
 (Scale 1:25)



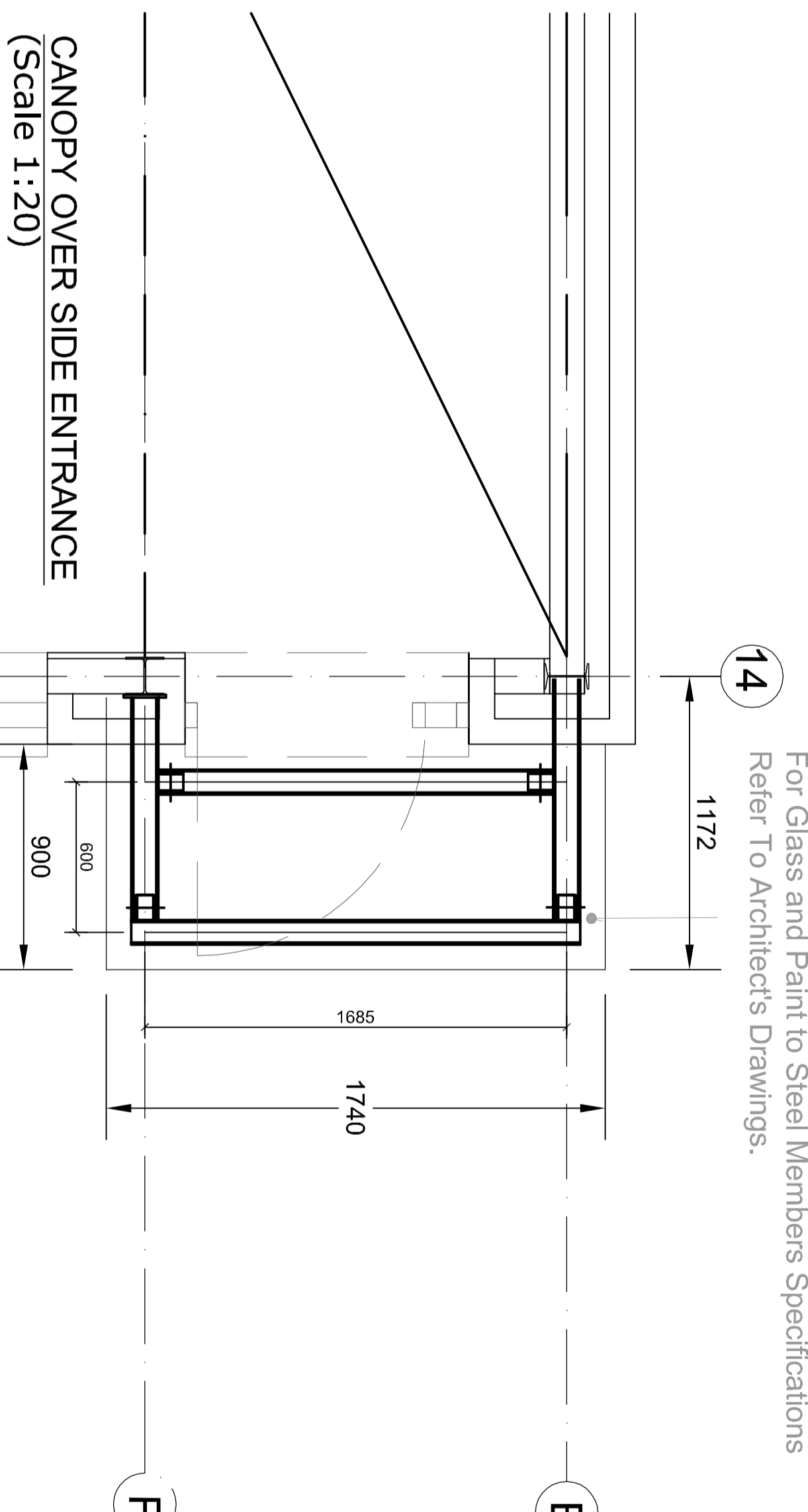
230x8mm thk Curved Steel Plate  
 CP4 (TOS = 100.909mm), With End  
 Connection to Columns (At Gridlines  
 C4, C5, C6, C7 & C8) and M8 x 75mm  
 Masonry/Coach Screws to top of  
 Blockwork At 450mm c/c.



CANOPY MEMBERS  
 60X30X3SHS As indicated (Use SHS members @ 99.860)  
 For Glass and Paint to Steel Members Specifications  
 Refer To Architects Drawings.



**CURVED PLATES - OVER MAIN ENTRANCE**  
 (Scale 1:20)



**CANOPY OVER SIDE ENTRANCE**  
 (Scale 1:20)