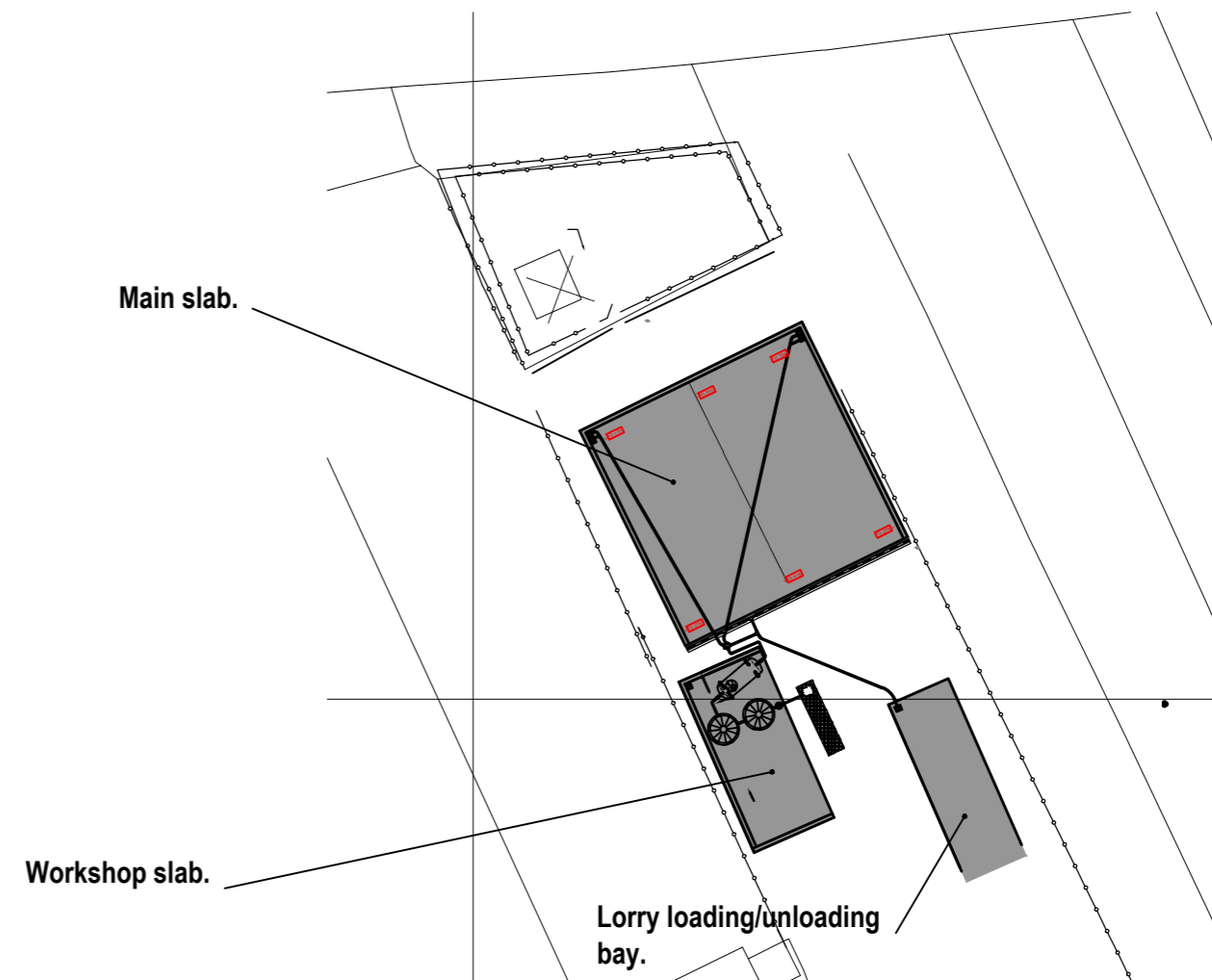


**Plan**  
Scale: 1/50

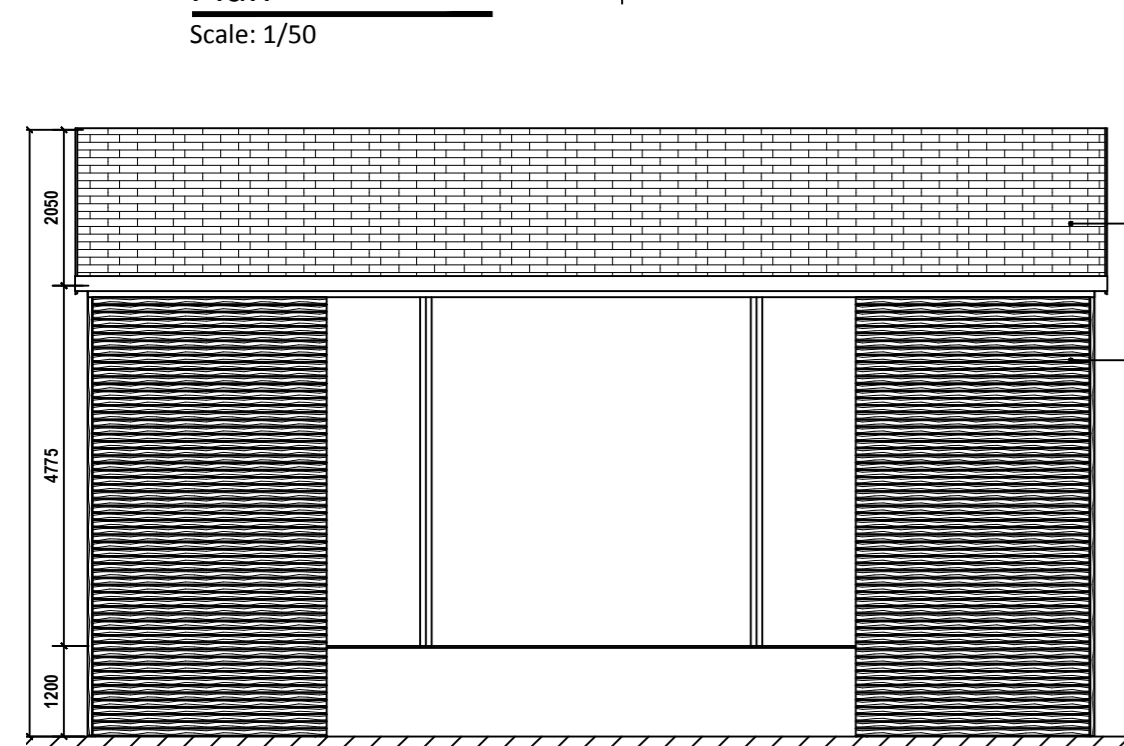


**Site Layout**  
Scale: 1/500

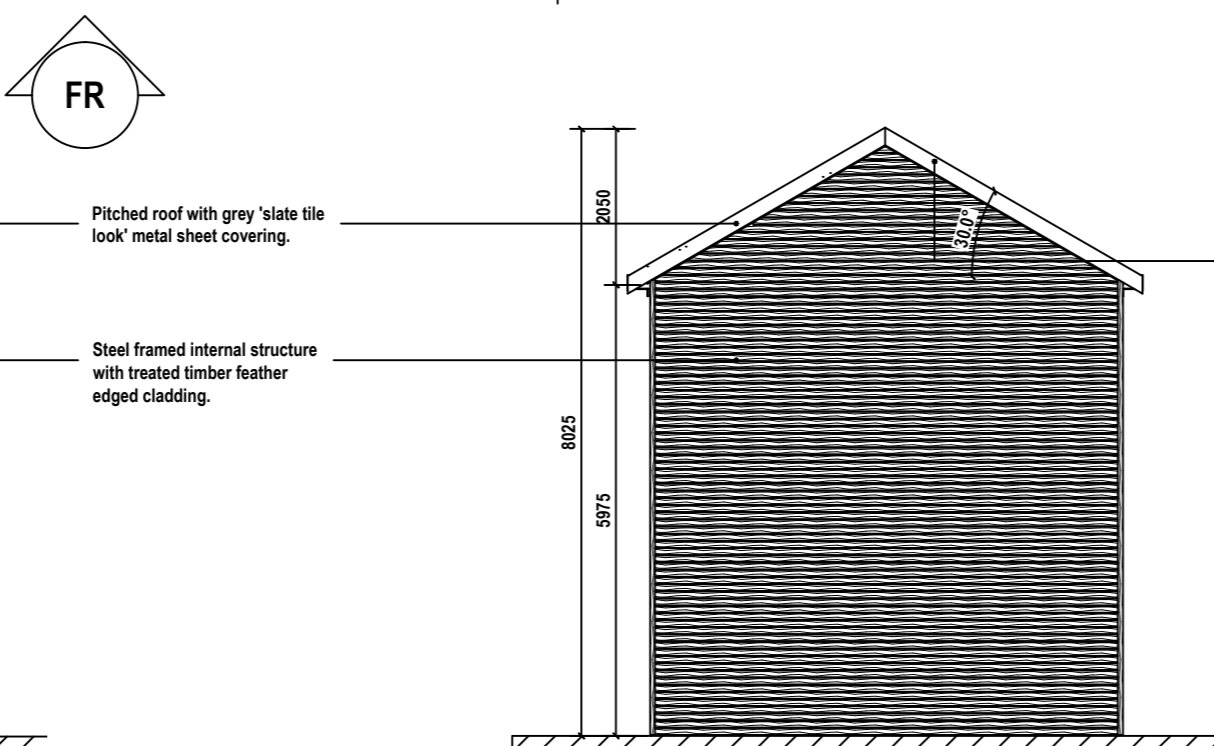


**Site Location**  
Scale: 1/2500

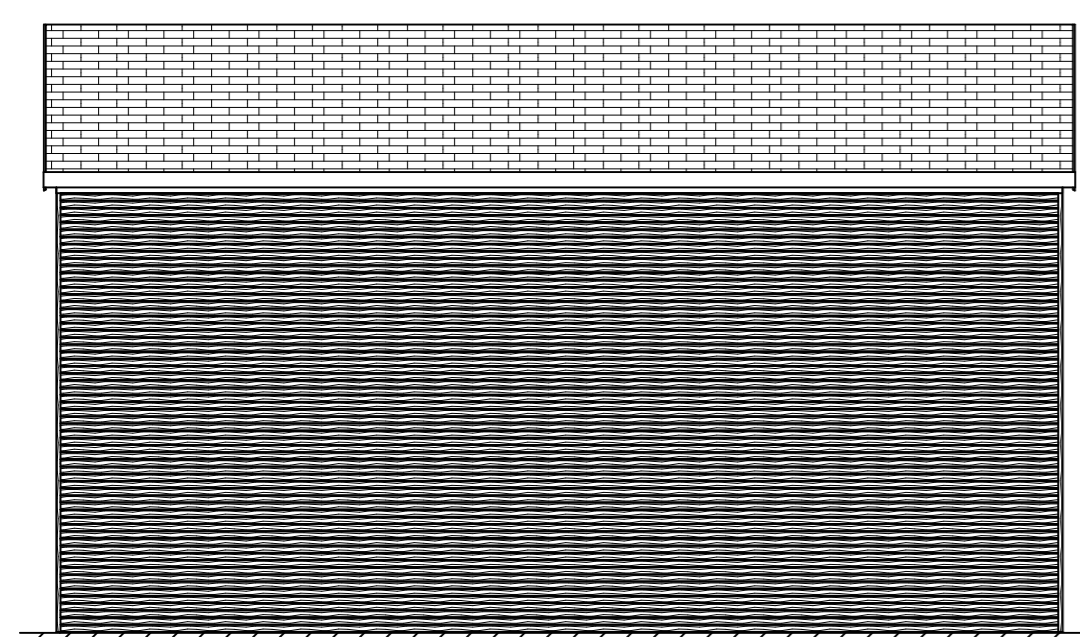
Rev	Description	By	Date
P1	First issue.	swf	08.02.12
P2	Street names added.	swf	27.02.12
P3	Amended following comments from the planning officer. Brick plinth wall added. Metal profile sheathing changed to horizontal timber larch-top boarding.	swf	29.06.12
P4	Notes corrected. Dimensions up-dated.	swf	24.07.12
P5	Minimum opening and roof angle dims added. Brick plinth removed and extent of timber cladding extended down. Concrete plinth returns shown. Timber removed from front. Space between front beams increased.	swf	30.11.12
P6	Timber cladding added back to front returns. Note changed regarding timber cladding.	swf	03.01.13



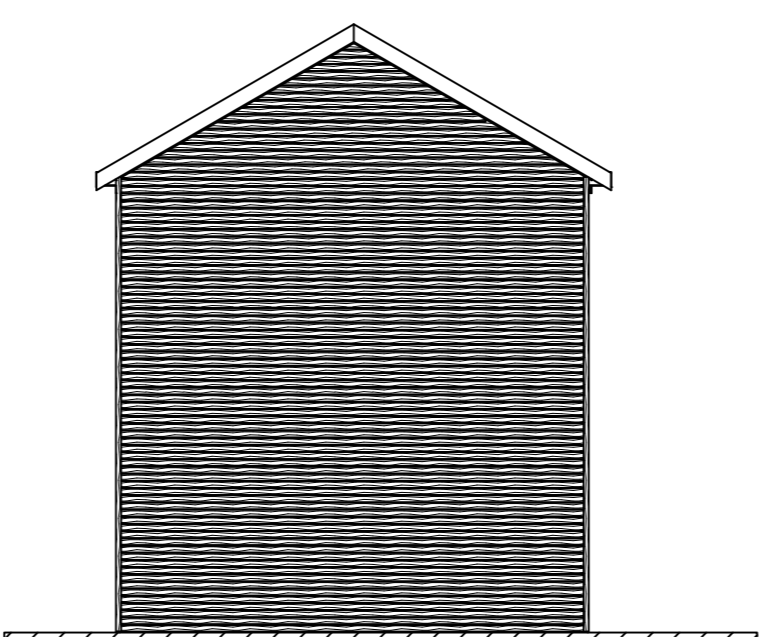
**Elevation - front (FR)**  
Scale: 1/100



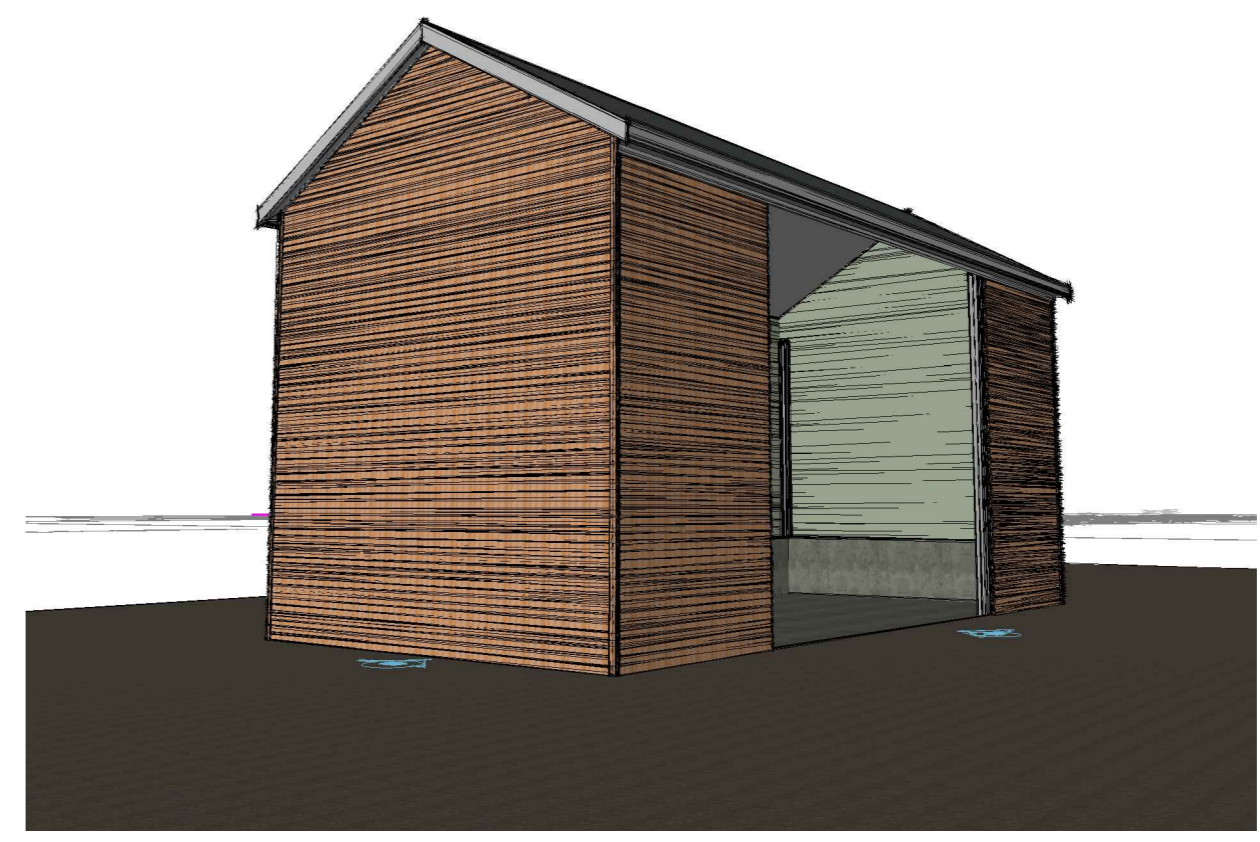
**Elevation - side 1 (RI)**  
Scale: 1/100



**Elevation - rear (RE)**  
Scale: 1/100



**Elevation - side 2 (LE)**  
Scale: 1/100



Client MK PDR Spares Ltd.,			
Project New Workshop Enclosure 146 Newport road, New Bradwell, MK13 0AA.			
Job Planning Drawings			
Drawing Title Site Plans, Floor Plan and Elevations			
Scale	as noted	Drawn	SWF
Date	08.02.12	Checked	AA
Project No./Discipline	1116-	Drawing No.	001
		Revision	P6

DRAWING STATUS: PRELIMINARY - subject to planning approval

E:\Projects\1116\_Spare Parts Milton Keynes\Planning\Drawings\1116-001.dwg - Proposed Workshop.dwg - 08/02/2012 11:12:12, 10:41, 1194, 1047, 1028, 1028, 1028, 11