

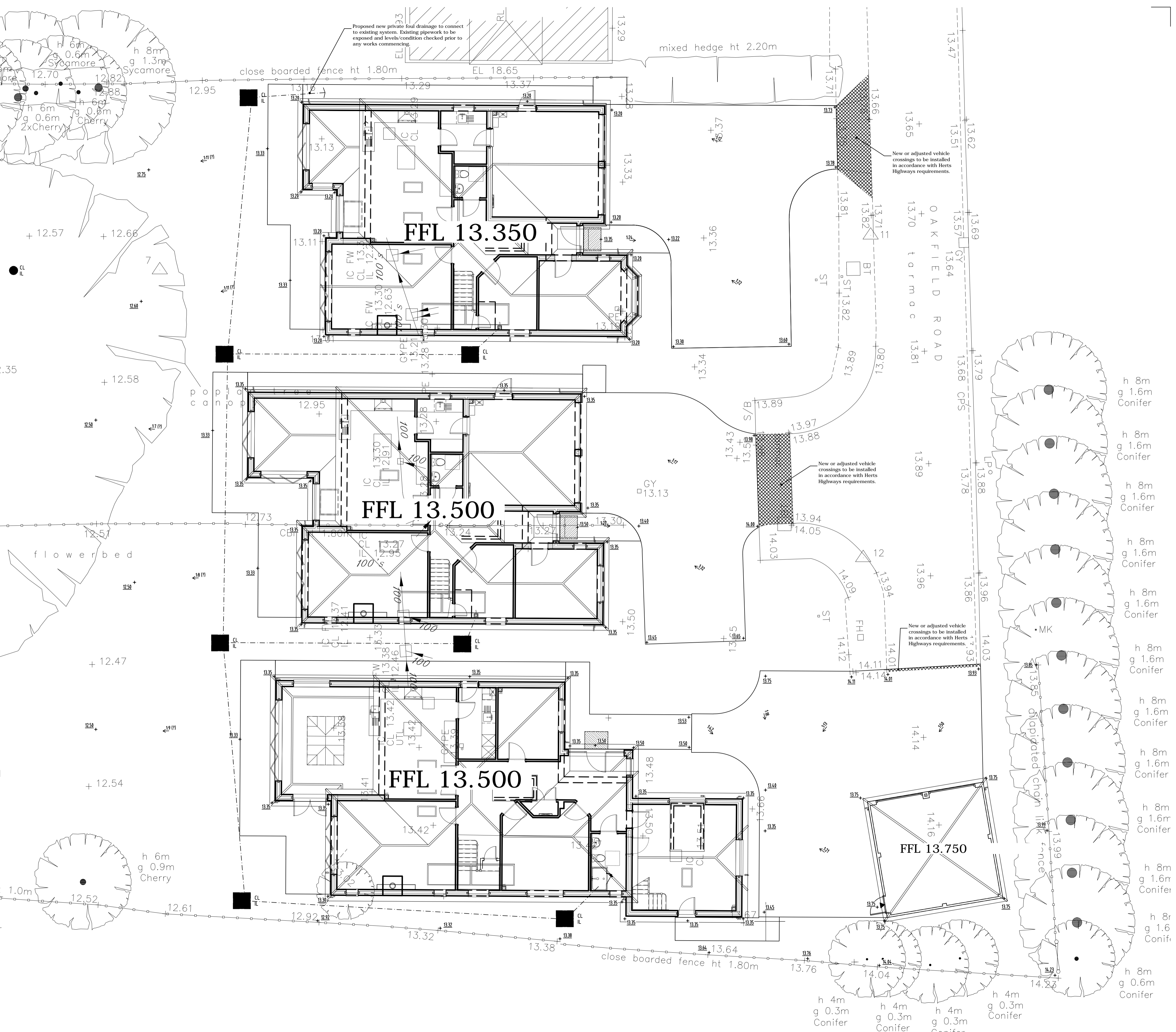
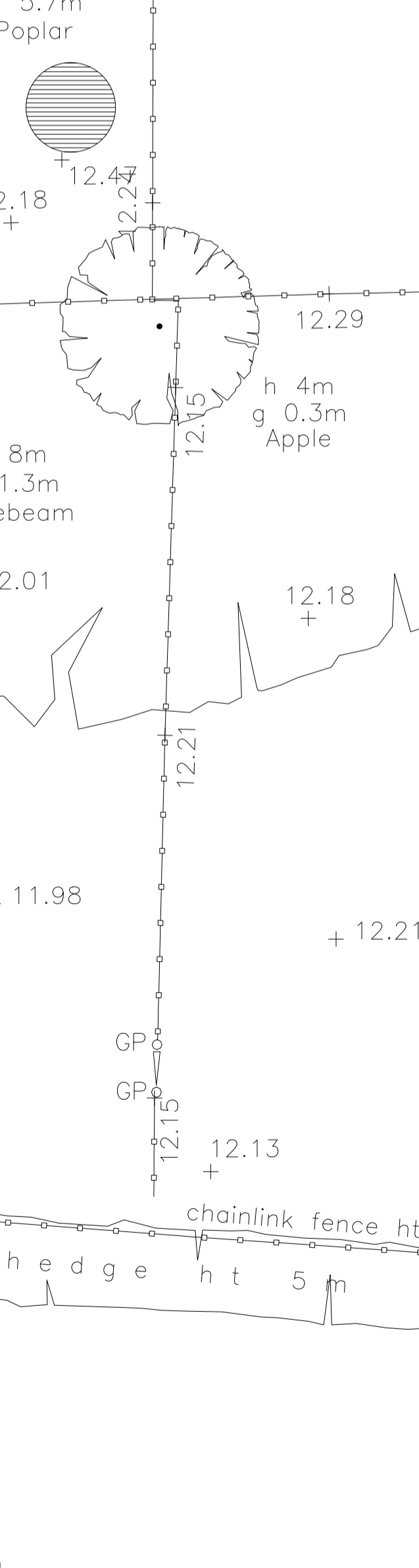
- General Engineering Notes**
- This drawing shall be read in conjunction with all other relevant architects and engineers drawings.
  - It is the contractors responsibility to locate existing services where they may be affected by proposed works.
  - Design and construction details for all new or amended vehicle crossings to be approved by Herts Highways.
  - Where private drives fall towards adoptable highways, surface water run off shall be prevented from draining onto public areas with the use of a ditch channel and yard gully or proprietary drainage channel located at the rear of adoptable footpath.
  - Where private drives fall towards private garages, a drainage channel with internal fall shall be used to prevent flooding of garages. Channels to be 'Acro' or similar approved.
  - 5" dia 100mm deep VC pipes with 100mm minimum falls of 1:80 unless noted otherwise.
  - All adoptable drainage shall be either clay, to BS65 with either socket or sleeve joint or concrete to BS911 part 1.
  - All domestic drainage beneath adoptable highways shall be verified clay extra strength and with concrete bed and surround should cover be less than 1200mm.
  - Any discrepancies, ambiguities or anomalies in the information provided on this or any of the engineering drawings package must be reported prior to work proceeding.
  - The last or disconnecting length of any building drainage system which connects to adoptable or D.C. drainage shall be 100mm.
  - Block paving in adoptable carriageways to be 750mm x 400mm x 40mm.
  - Any service strips and areas within the road junctions (non footway or carriageway) shall be grassed.
  - Gullies shall not be placed within the limits of dropped crossings used by pedestrians or vehicles unless required for a low point.
  - Stopcock and meter covers shall not be located within vehicular crossing construction.

**PRIVATE DRAINAGE**

- INSPECTION CHAMBERS**  
Less than 0.6m depth Read in conjunction with Engineers Details.
- INSPECTION CHAMBERS**  
0.6m to 1.2m OR restricted access > 1.2m (450Dia) Read in conjunction with Engineers Details.
- INSPECTION CHAMBERS**  
1.2m to 1.5m depth Read in conjunction with Engineers Details.
- YARD GULLY**  
Herts Highways 'Acro' or similar approved.
- Acro Drainage**  
Channel or similar. Trapped and roddable with 100Dia outlet.
- PCC Dished Channel**  
see detail on drawing

**REGRADE**

- RETAINING WALL**  
to S.E details
- WALLS TO BE WATERPROOFED**  
150MM above ground level
- LOW RETAINING**  
'slab on edge' (max 0.3M) or gravel boards below fences (max 0.6M)
- AMBULANT STEPS**  
0.3M going 0.15M max rise
- PROPOSED BANKING**  
with Gradient
- PROPOSED FINISHED LEVELS**



**CISTEC**  
CHARTERED CIVIL & STRUCTURAL ENGINEERING CONSULTANTS

Suite 116, Milton Keynes Business Centre, Foxhunter Drive, Milton Keynes, MK14 6GD.  
T: 01908 688555 F: 01908 410333 www.cistec.net e: info@cistec.net

**Client**

**Jarvis Group**

1 The Forresters, High Street, Harpenden, AL5 2FB.  
T: 01582 761211 F: 01582 764100 www.jarvisgroupplc.co.uk

**Drawing**

Engineering Layout

**Project**

46-48 Oakfield Road, Harpenden.

**Scale** 1:100 @ A1 **Date** 10.05.11 **Approved**

**Drawing no.** 1035/501 p1

The enclosed drawing and design remains the copyright of CISTEC Design LLP unless or until agreement is made in writing. This information may not be copied, distributed or changed in any form without prior written consent.