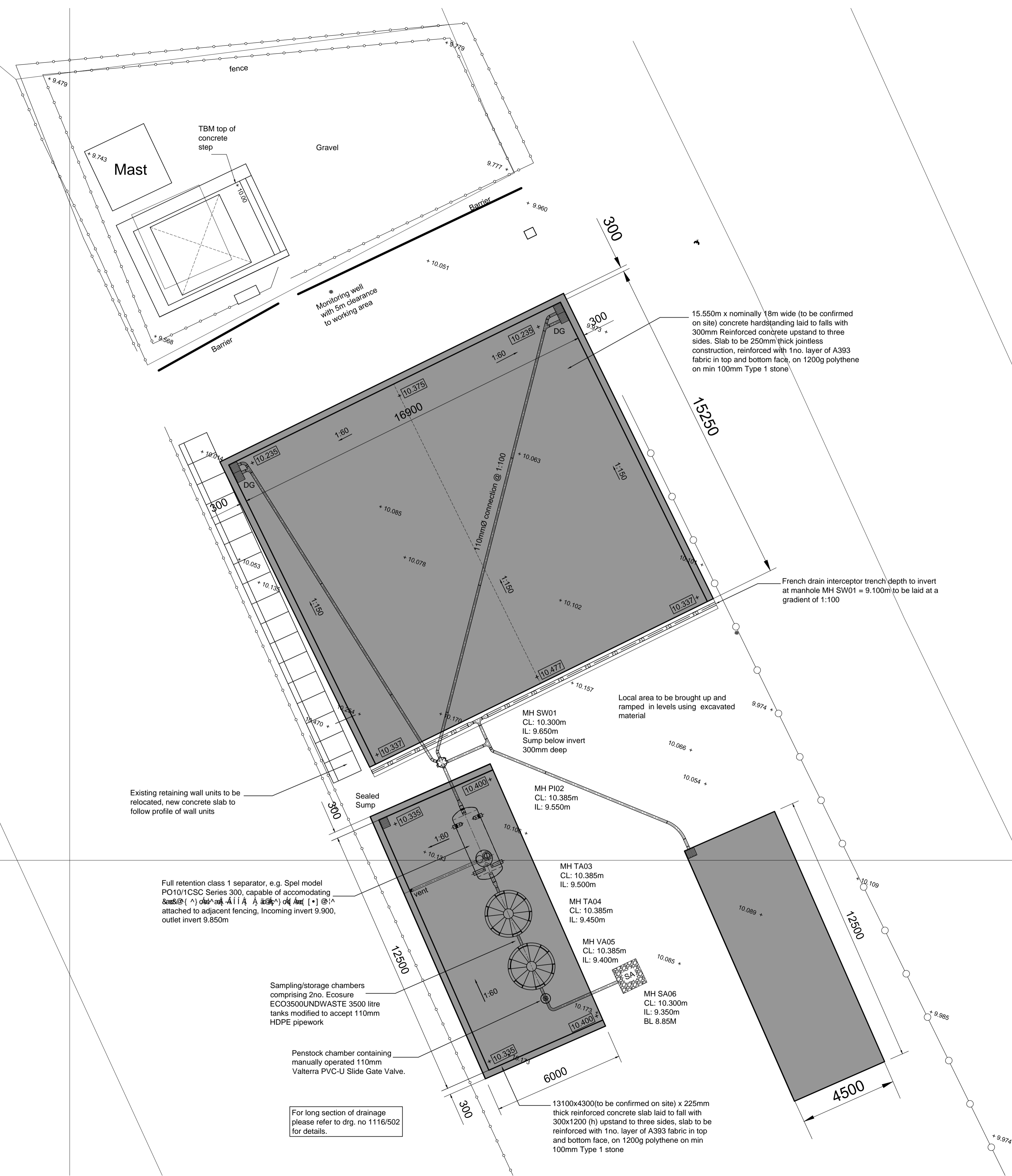


PRIVATE DRAINAGE	
	INSPECTION CHAMBERS Less than 0.6m depth Read in conjunction with Standard Drainage Details.
	INSPECTION CHAMBERS 0.6m to 1.2m OR restricted access >1.2m (4500a) Read in conjunction with Standard Drainage Details.
	INSPECTION CHAMBERS 1.2m to 1.5m depth Read in conjunction with Standard Drainage Details.
	YARD GULLY Trapped and roddable with 100mm dia. outlet.
	Drainage Channel. Trapped and roddable with 100mm dia. outlet.
	PCC Dished Channel see detail on drawing #####.

REGRADE	
	RETAINING WALL to S.E details
	WALLS TO BE TANKED 150MM above ground level
	UNDERBUILD Exposed brickwork below normal 150mm below dpc.
	LOW RETAINING 'slab on edge' (max 0.3M) or gravel boards below fences (max 0.6M)
	AMBULANT STEPS 0.3M going 0.15M max rise
	LEVEL THRESHOLD 1.2Msq. (min) Level area with flush threshold.
	PROPOSED GRADIENT Normal gradients not requiring banking or handrails
	PROPOSED BANKING With gradient.
	PROPOSED FINISHED LEVELS Proposed regraded or constructed level.
	PROPOSED FINISHED LEVELS Proposed unchanged existing level from interpolated survey.



- General Engineering Notes**
- This drawing shall be read in conjunction with all other relevant architects and engineers drawings.
 - It is the contractors responsibility to locate existing services where they may be affected by proposed works.
 - Design and construction details for all new or amended vehicle crossings to be approved by Herts Highways.
 - Where private drives fall towards adoptable highways, surface water run off shall be prevented from draining onto public areas with the use of a ditched channel and yard gully or proprietary drainage channel located at the rear of adoptable footpath.
 - Where private drives fall towards private garages, a drainage channel with internal fall shall be used to prevent flooding of garages. Channels to be 'Aco' or similar approved.
 - All private drainage to be 100mm dia. with minimum falls of 1:80 unless noted otherwise.
 - All adoptable drainage shall be either clay, to BS65 with either socket or sleeve joint or concrete to BS5911 part 1.
 - All domestic drainage beneath adoptable highways shall be vitrified clay extra strength and with concrete bed and surround should cover be less than 1200mm.
 - Any discrepancies, ambiguities or anomalies in the information provided on this or any of the engineering drawings package must be reported prior to work proceeding.
 - The last or disconnecting length of any building drainage system which connects to adoptable or adopted sewers shall be 150mm dia.
 - Block paving in adoptable carriageways to be 777 in colour and laid to 45 deg. herringbone pattern.
 - Any service strips and areas within the road junctions (non footway or carriageway) shall be grassed.
 - Gullies shall not be placed within the limits of dropped crossings used by pedestrians or vehicles unless required for a low point.
 - Stop cock and meter covers shall not be located within vehicular crossing construction.

Rev	Amendment	By	Date
P1	First issue.	SWF	19.01.12

CISTEC
 CHARTERED CIVIL & STRUCTURAL ENGINEERING CONSULTANTS

Suite 116, Milton Keynes Business Centre, Foxhunter Drive,
 Linford Wood, Milton Keynes, MK14 6GD.
 T:01908 686855 F:01908 410333 www.cistec.net e:info@cistec.net

Client
MK PDR Spares Ltd

Drawing
Engineering Layout

Project
 146 Newport Road, New Bradwell, MK13 0AA

Scale 1:100 @ A1 Date 19.01.12 Approved

Drawing no. **1116/501 P1**

© The enclosed drawing and design remains the copyright of CISTEC Design LLP unless an agreed agreement is made in writing. This information may not be copied, distributed or changed in any form without prior written consent.

STATUS: PRELIMINARY