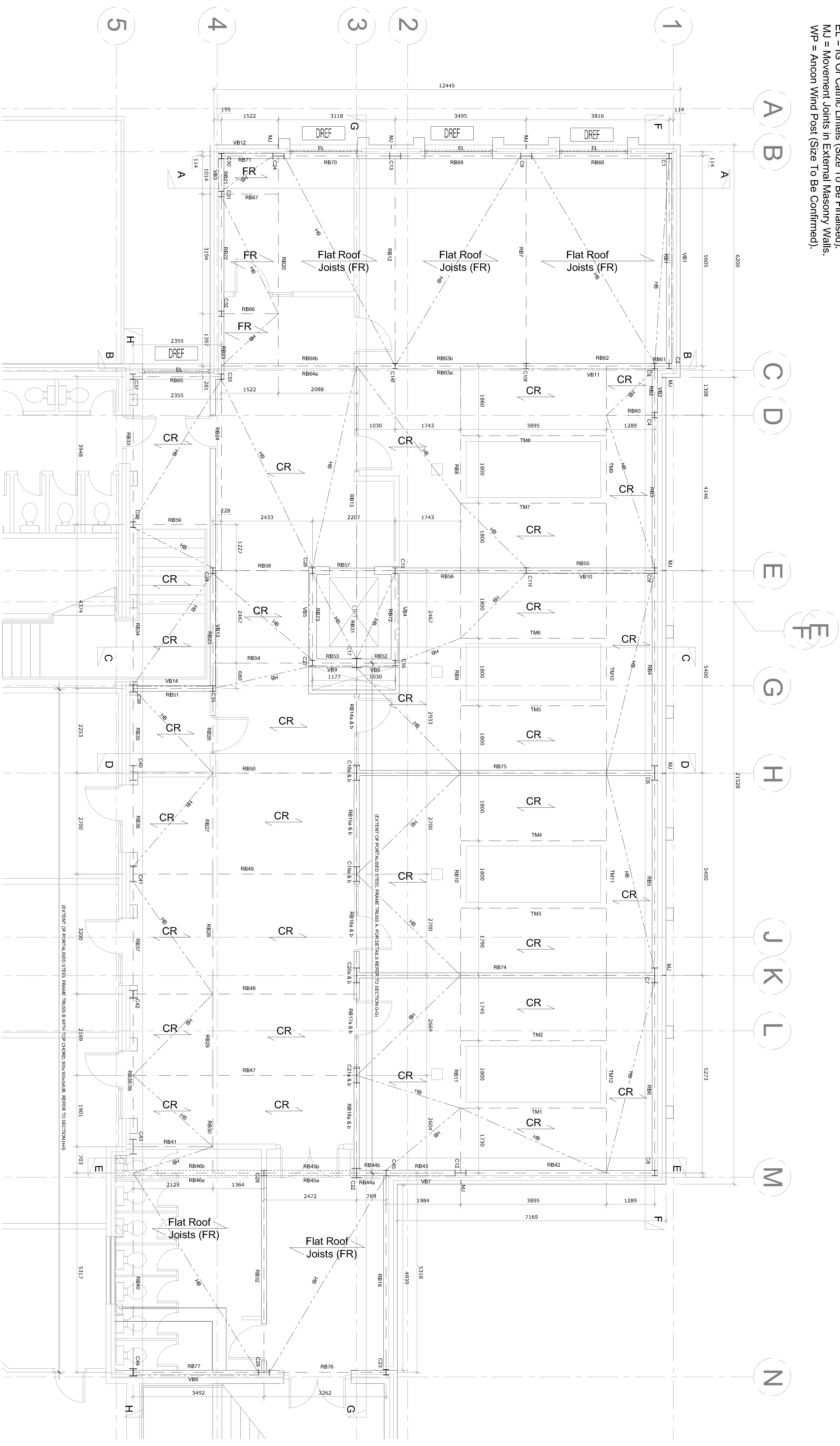


PROPOSED FIRST FLOOR PLAN

- (Showing Proposed Structures Over)
- VB = Vertical Cross Bracing (120 x 15mm thk MS Plates)
 - HB = Horizontal Compressive Bracing (76, 1x3 CHS)
 - FR = Flat Roof Joists (47x175 Deep C24 @ 600mm c/c)
 - CR = Cut Rafter (60x170 Deep C24 @ 450mm c/c)
 - EL = IG Or Carline Lintel (Size To Be Finalised)
 - MJ = Movement Joints in External Masonry Walls
 - WP = Ancor Wind Post (Size To Be Confirmed)



NOTES
FOR GENERAL NOTES, TYPICAL SECTIONS AND DETAILS REFER TO DRAWING 1280-303

Rev	Amendment	By	Date
P1	Final Issue	AS	24.10.13
P2	For Review & Comments Only	AS	24.10.13
P3	For Review & Comments Only	AS	20.07.14



15th FLOOR, 150, MARKET STREET, SYDNEY NSW 2000, AUSTRALIA
 1501 MARKET STREET, SYDNEY NSW 2000, AUSTRALIA
 1501 MARKET STREET, SYDNEY NSW 2000, AUSTRALIA

Client
Hounslow Mosque
Trustee Committee

Drawing
STRUCTURAL ENGINEERING
FIRST FLOOR PLAN
SHOWING STRUCTURES ABOVE

Scale as noted @ Date Issued: 2013
 Drawn by: Houslow, Janna Mousa
 Approved by: AS
1280-303 P3